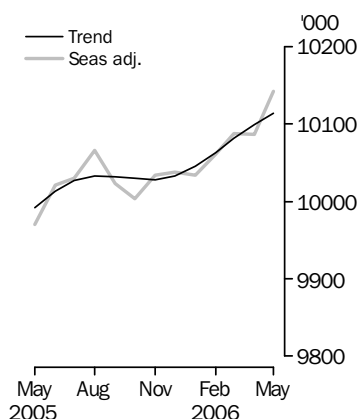


# LABOUR FORCE

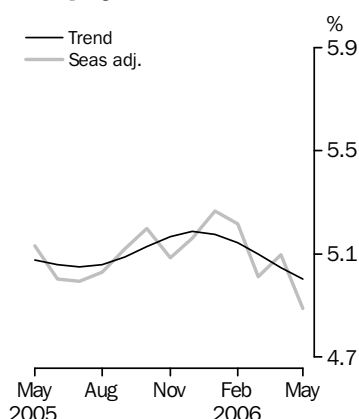
AUSTRALIA

EMBARGO: 11.30AM (CANBERRA TIME) THURS 8 JUN 2006

## Employed Persons



## Unemployment rate



## INQUIRIES

For further information about these and related statistics, contact the National Information and Referral Service on 1300 135 070 or Michael Johnson on Canberra (02) 6252 6525.

## KEY FIGURES

	Apr 2006	May 2006	Apr 06 to May 06	May 05 to May 06
<b>Trend</b>				
Employed persons ('000)	10 099.1	10 114.1	15.0	1.2 %
Unemployed persons ('000)	537.0	532.6	-4.3	-0.3 %
Unemployment rate (%)	5.0	5.0	0.0 pts	-0.1 pts
Participation rate (%)	64.4	64.5	0.0 pts	-0.1 pts
<b>Seasonally Adjusted</b>				
Employed persons ('000)	10 086.3	10 142.2	56.0	1.7 %
Unemployed persons ('000)	541.8	521.3	-20.5	-3.3 %
Unemployment rate (%)	5.1	4.9	-0.2 pts	-0.2 pts
Participation rate (%)	64.4	64.5	0.1 pts	0.1 pts

## KEY POINTS

### TREND ESTIMATES (MONTHLY CHANGE)

- EMPLOYMENT increased to 10,114,100
- UNEMPLOYMENT decreased to 532,600
- UNEMPLOYMENT RATE remained at 5.0%
- PARTICIPATION RATE increased to 64.5%

### SEASONALLY ADJUSTED ESTIMATES (MONTHLY CHANGE)

#### EMPLOYMENT

- increased by 56,000 to 10,142,200. Full-time employment increased by 55,800 to 7,254,000 and part-time employment increased slightly to 2,888,200.

#### UNEMPLOYMENT

- decreased by 20,500 to 521,300. The number of persons looking for full-time work increased by 5,700 to 371,700 while the number of persons looking for part-time work decreased by 26,200 to 149,600.

#### UNEMPLOYMENT RATE

- decreased by 0.2 percentage points to 4.9%. The male unemployment rate decreased by 0.1 percentage point to 4.8% and the female unemployment rate decreased by 0.3 percentage points to 5.0%.

#### PARTICIPATION RATE

- increased by 0.1 percentage point to 64.5%.

# NOTES

## FORTHCOMING ISSUES

ISSUE	RELEASE DATE
June 2006	13 July 2006
July 2006	10 August 2006
August 2006	7 September 2006
September 2006	12 October 2006
October 2006	9 November 2006
November 2006	7 December 2006

.....

## CYCLONE LARRY

In the aftermath of Cyclone Larry, operational difficulties continue to be experienced in conducting the monthly Labour Force Survey in parts of Queensland. Investigations were conducted to identify possible impacts on Labour Force estimates for May 2006. These investigations did not identify any material effects on the aggregate estimates for this month.

## ROUNDING

Estimates of monthly change shown on the front cover have been calculated using unrounded estimates, and may be different from, but are more accurate than, movements obtained from the rounded estimates. The graphs on the front cover also depict unrounded estimates.

## SAMPLING ERRORS

The estimates in this publication are based on a sample survey. Because the entire population is not enumerated, the published estimates and the movements derived from them are subject to sampling variability. Standard errors give a measure of this variability and appear on pages 27 and 28.

The 95% confidence intervals below provide another way of looking at the variability inherent in estimates from sample surveys. The interval bounded by the two limits is the 95% confidence interval. A 95% confidence interval has a 95% chance of including the true value of the estimate.

## MOVEMENTS IN SEASONALLY ADJUSTED SERIES BETWEEN APRIL AND MAY 2006

.....

	<i>Monthly change</i>	<i>95% Confidence interval</i>	
Total Employment	56 000	4 000	to 108 000
Total Unemployment	-20 500	-48 900	to 7 900
Unemployment rate	-0.2 pts	-0.4 pts	to 0.0 pts
Participation rate	0.1 pts	-0.3 pts	to 0.5 pts

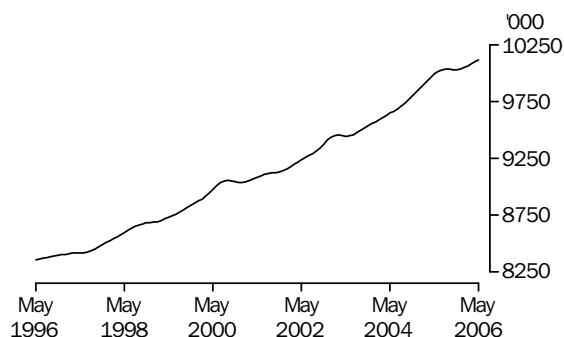
.....

Dennis Trewin  
Australian Statistician

## PRINCIPAL LABOUR FORCE SERIES TREND ESTIMATES

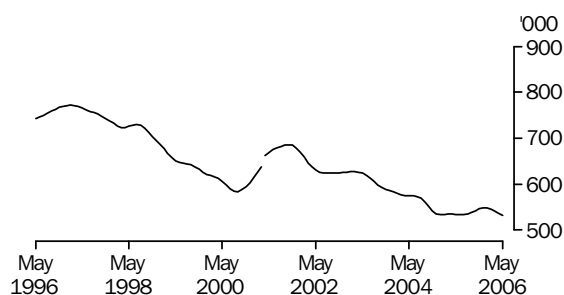
### EMPLOYED PERSONS

The trend estimate of employed persons rose from 8,357,100 in May 1996 to 9,056,800 in September 2000. The trend then fell slightly to 9,037,300 in January 2001, before generally rising to stand at a high of 10,114,100 in May 2006.



### UNEMPLOYED PERSONS

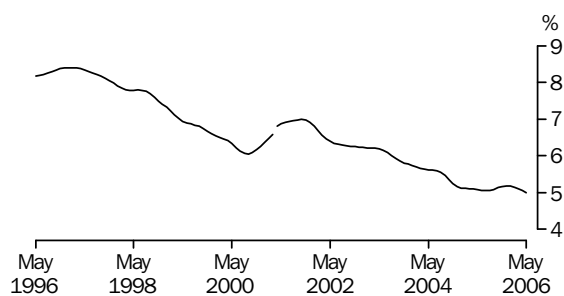
The trend estimate of unemployed persons rose from 742,600 in May 1996 to 771,700 in February 1997. The trend then generally fell to 583,700 in September 2000, before rising to 685,800 in October 2001. The trend fell to 532,900 in January 2005, before rising to 548,800 in December 2005. Since then, the trend has fallen to stand at 532,600 in May 2006.



Series break at April 2001; see paragraph 13 of Explanatory Notes.

### UNEMPLOYMENT RATE

The trend unemployment rate rose from 8.2% in May 1996 to 8.4% in February 1997, before falling to 6.1% in September 2000. After rising to 7.0% in October 2001, the trend fell to 5.1% in July 2005. The trend rose slightly to 5.2% in December 2005, before falling to stand at 5.0% in May 2006.



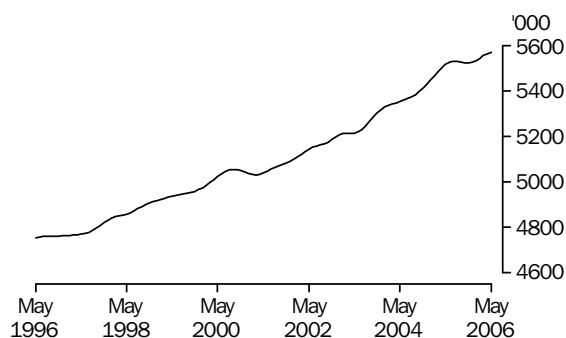
Series break at April 2001; see paragraph 13 of Explanatory Notes.

## EMPLOYED PERSONS TREND ESTIMATES

### EMPLOYED MALES

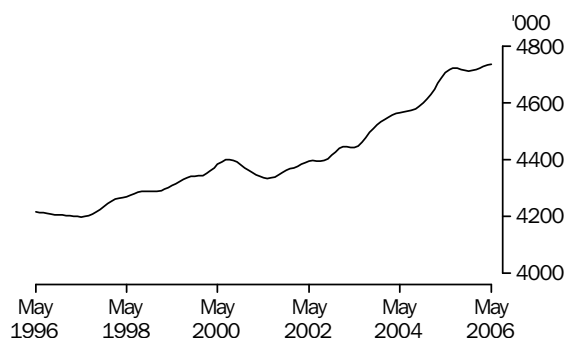
#### TOTAL

The trend estimate of employed males rose from 4,753,900 in May 1996 to 5,054,900 in September 2000, before falling to stand at 5,031,100 in March 2001. The trend has since generally risen to stand at 5,570,400 in May 2006.



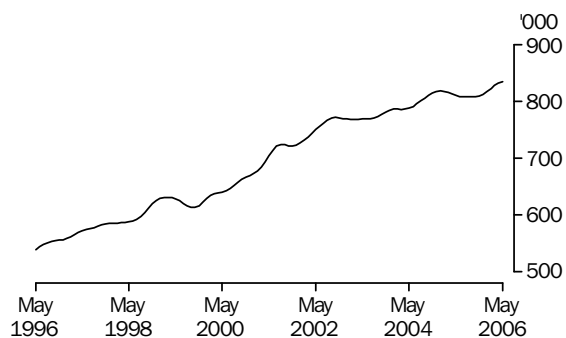
#### MALES EMPLOYED FULL TIME

The trend estimate for males employed full time generally rose from 4,215,200 in May 1996 to 4,400,200 in August 2000, before falling to 4,334,300 in June 2001. The trend has since generally risen to stand at 4,736,000 in May 2006.



#### MALES EMPLOYED PART TIME

The trend estimate of males employed part time rose from 538,700 in May 1996 to 631,100 in March 1999, before falling to 613,200 in September 1999. The trend has since generally risen to stand at 834,400 in May 2006.

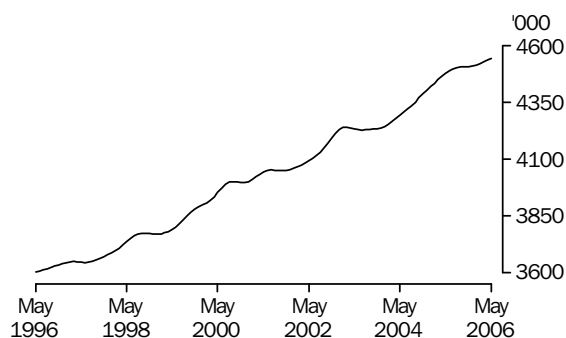


## EMPLOYED PERSONS TREND ESTIMATES *continued*

### EMPLOYED FEMALES

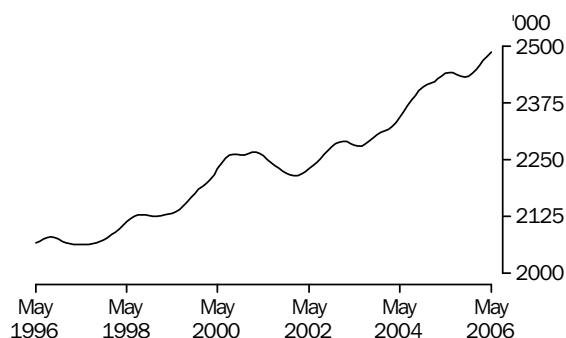
#### TOTAL

The trend estimate of employed females rose from 3,603,200 in May 1996 to 4,240,700 in March 2003, with strong growth in late 2002. The trend estimate then fell to 4,227,800 in July 2003, before rising to stand at 4,543,800 in May 2006.



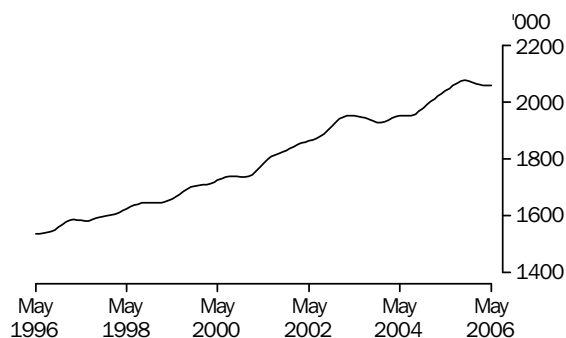
#### FEMALES EMPLOYED FULL TIME

The trend estimate of females employed full time generally rose from 2,067,000 in May 1996 to 2,266,600 in March 2001. The trend then fell to 2,215,500 in January 2002, before generally rising to stand at 2,485,200 in May 2006.



#### FEMALES EMPLOYED PART TIME

The trend estimate of females employed part time rose steadily from 1,536,200 in May 1996 to 1,952,400 in April 2003. The trend then decreased to 1,927,200 in December 2003, before rising to 2,075,600 in October 2005. Since then, the trend estimate has generally fallen to stand at 2,058,500 in May 2006.



# LABOUR FORCE STATUS (AGED 15 YEARS & OVER): Trend

	EMPLOYED			UNEMPLOYED		UNEMPLOYMENT RATE			
	Full time	Part time	Total	Looking for f/t work	Total	Labour force	Looking for f/t work	Total	Participation rate
	'000	'000	'000	'000	'000	'000	%	%	%
MALES									
May 2003	4 443.6	768.7	5 212.3	283.3	344.8	5 557.1	6.0	6.2	71.5
May 2004	4 564.7	787.5	5 352.2	255.5	313.2	5 665.4	5.3	5.5	71.7
2005									
May	4 704.6	809.8	5 514.4	220.9	279.8	5 794.2	4.5	4.8	72.2
June	4 716.2	808.1	5 524.3	222.2	280.8	5 805.1	4.5	4.8	72.3
July	4 721.4	807.9	5 529.3	224.5	282.9	5 812.2	4.5	4.9	72.3
August	4 721.3	808.2	5 529.4	227.4	286.1	5 815.5	4.6	4.9	72.3
September	4 718.1	807.9	5 526.0	230.6	290.3	5 816.3	4.7	5.0	72.2
October	4 714.6	807.8	5 522.4	233.9	295.0	5 817.4	4.7	5.1	72.1
November	4 712.2	808.9	5 521.1	236.3	299.1	5 820.1	4.8	5.1	72.0
December	4 712.6	811.8	5 524.4	236.5	300.8	5 825.3	4.8	5.2	72.0
2006									
January	4 716.1	816.5	5 532.7	234.9	299.9	5 832.6	4.7	5.1	72.0
February	4 721.4	822.1	5 543.5	232.4	297.2	5 840.7	4.7	5.1	72.0
March	4 726.7	827.3	5 554.0	229.6	293.5	5 847.5	4.6	5.0	72.0
April	4 732.2	831.3	5 563.4	226.8	289.1	5 852.6	4.6	4.9	72.0
May	4 736.0	834.4	5 570.4	224.3	285.0	5 855.3	4.5	4.9	72.0
FEMALES									
May 2003	2 281.0	1 951.2	4 232.2	181.7	279.0	4 511.2	7.4	6.2	56.0
May 2004	2 342.4	1 951.9	4 294.4	164.1	261.3	4 555.6	6.5	5.7	55.7
2005									
May	2 439.0	2 038.1	4 477.1	155.5	254.4	4 731.5	6.0	5.4	57.1
June	2 441.7	2 047.2	4 488.9	153.1	252.7	4 741.6	5.9	5.3	57.2
July	2 440.6	2 057.0	4 497.5	151.0	250.4	4 748.0	5.8	5.3	57.2
August	2 437.0	2 066.2	4 503.2	149.6	248.4	4 751.5	5.8	5.2	57.2
September	2 433.4	2 072.7	4 506.1	149.5	247.4	4 753.6	5.8	5.2	57.2
October	2 431.7	2 075.6	4 507.3	150.4	247.2	4 754.5	5.8	5.2	57.1
November	2 433.4	2 074.0	4 507.4	151.8	247.5	4 754.8	5.9	5.2	57.0
December	2 439.3	2 069.5	4 508.8	152.8	248.0	4 756.7	5.9	5.2	57.0
2006									
January	2 448.6	2 064.5	4 513.1	152.9	248.3	4 761.4	5.9	5.2	57.0
February	2 458.8	2 060.8	4 519.6	152.1	248.4	4 768.0	5.8	5.2	57.0
March	2 468.6	2 058.7	4 527.3	150.8	248.2	4 775.5	5.8	5.2	57.1
April	2 478.0	2 057.7	4 535.7	149.2	247.8	4 783.5	5.7	5.2	57.1
May	2 485.2	2 058.5	4 543.8	147.7	247.7	4 791.4	5.6	5.2	57.2
PERSONS									
May 2003	6 724.6	2 719.9	9 444.5	465.0	623.9	10 068.4	6.5	6.2	63.6
May 2004	6 907.1	2 739.5	9 646.6	419.6	574.5	10 221.1	5.7	5.6	63.5
2005									
May	7 143.6	2 847.9	9 991.5	376.4	534.2	10 525.7	5.0	5.1	64.6
June	7 157.9	2 855.3	10 013.2	375.3	533.5	10 546.7	5.0	5.1	64.6
July	7 162.0	2 864.8	10 026.8	375.4	533.3	10 560.1	5.0	5.1	64.6
August	7 158.2	2 874.4	10 032.6	376.9	534.5	10 567.1	5.0	5.1	64.6
September	7 151.4	2 880.6	10 032.1	380.1	537.8	10 569.9	5.0	5.1	64.5
October	7 146.3	2 883.4	10 029.7	384.4	542.2	10 571.9	5.1	5.1	64.5
November	7 145.6	2 882.9	10 028.4	388.1	546.6	10 575.0	5.2	5.2	64.4
December	7 151.9	2 881.3	10 033.2	389.4	548.8	10 582.0	5.2	5.2	64.4
2006									
January	7 164.7	2 881.0	10 045.7	387.8	548.3	10 594.0	5.1	5.2	64.4
February	7 180.2	2 882.9	10 063.1	384.5	545.6	10 608.7	5.1	5.1	64.4
March	7 195.3	2 886.0	10 081.3	380.4	541.6	10 622.9	5.0	5.1	64.4
April	7 210.2	2 889.0	10 099.1	375.9	537.0	10 636.1	5.0	5.0	64.4
May	7 221.2	2 892.9	10 114.1	372.0	532.6	10 646.8	4.9	5.0	64.4

# LABOUR FORCE STATUS (AGED 15 YEARS & OVER): Seasonally Adjusted

	EMPLOYED			UNEMPLOYED		UNEMPLOYMENT RATE			
	Full time	Part time	Total	Looking for f/t work	Total	Labour force	Looking for f/t work	Total	Participation rate
	'000	'000	'000	'000	'000	'000	%	%	%
MALES									
May 2003	4 449.6	765.1	5 214.7	282.5	342.2	5 556.8	6.0	6.2	71.5
May 2004	4 558.7	794.9	5 353.6	254.3	305.3	5 658.9	5.3	5.4	71.6
2005									
May	4 697.6	807.8	5 505.4	223.9	285.2	5 790.6	4.5	4.9	72.2
June	4 722.6	805.1	5 527.7	220.4	277.0	5 804.7	4.5	4.8	72.3
July	4 719.1	806.8	5 526.0	217.2	275.0	5 801.0	4.4	4.7	72.2
August	4 745.8	803.6	5 549.4	229.3	288.9	5 838.3	4.6	4.9	72.5
September	4 714.5	812.3	5 526.8	232.1	291.6	5 818.4	4.7	5.0	72.2
October	4 685.1	818.9	5 504.0	237.0	298.0	5 802.0	4.8	5.1	71.9
November	4 720.3	803.8	5 524.1	236.8	297.4	5 821.5	4.8	5.1	72.0
December	4 710.5	812.3	5 522.8	232.6	298.2	5 821.0	4.7	5.1	71.9
2006									
January	4 727.5	793.6	5 521.1	236.3	302.3	5 823.4	4.8	5.2	71.9
February	4 720.1	828.6	5 548.8	239.4	305.5	5 854.3	4.8	5.2	72.2
March	4 718.6	846.4	5 565.0	228.7	292.8	5 857.9	4.6	5.0	72.1
April	4 720.5	837.1	5 557.6	218.9	285.0	5 842.6	4.4	4.9	71.9
May	4 756.9	818.3	5 575.1	225.5	278.5	5 853.6	4.5	4.8	71.9
FEMALES									
May 2003	2 297.7	1 945.9	4 243.6	183.5	281.4	4 524.9	7.4	6.2	56.2
May 2004	2 337.4	1 952.7	4 290.1	160.8	255.6	4 545.7	6.4	5.6	55.6
2005									
May	2 425.3	2 039.4	4 464.6	154.3	254.2	4 718.8	6.0	5.4	57.0
June	2 457.6	2 035.8	4 493.4	151.5	250.6	4 744.0	5.8	5.3	57.2
July	2 443.5	2 060.7	4 504.2	151.3	252.3	4 756.5	5.8	5.3	57.3
August	2 436.0	2 080.1	4 516.1	145.8	244.3	4 760.4	5.6	5.1	57.3
September	2 441.9	2 054.1	4 496.0	152.9	249.2	4 745.2	5.9	5.3	57.1
October	2 413.0	2 086.3	4 499.3	151.1	250.7	4 750.0	5.9	5.3	57.0
November	2 430.5	2 079.2	4 509.7	147.5	240.3	4 750.0	5.7	5.1	57.0
December	2 439.3	2 075.6	4 514.8	150.8	248.2	4 763.0	5.8	5.2	57.1
2006									
January	2 454.9	2 058.3	4 513.2	160.5	255.6	4 768.8	6.1	5.4	57.1
February	2 466.5	2 045.9	4 512.4	154.6	248.4	4 760.8	5.9	5.2	56.9
March	2 454.6	2 067.8	4 522.5	147.6	239.5	4 762.0	5.7	5.0	56.9
April	2 477.7	2 051.0	4 528.7	147.1	256.8	4 785.5	5.6	5.4	57.1
May	2 497.2	2 069.9	4 567.1	146.3	242.8	4 809.9	5.5	5.0	57.4
PERSONS									
May 2003	6 747.3	2 710.9	9 458.2	466.0	623.5	10 081.8	6.5	6.2	63.7
May 2004	6 896.1	2 747.6	9 643.7	415.1	560.9	10 204.5	5.7	5.5	63.5
2005									
May	7 122.9	2 847.2	9 970.0	378.2	539.4	10 509.4	5.0	5.1	64.5
June	7 180.1	2 840.9	10 021.1	371.9	527.6	10 548.7	4.9	5.0	64.6
July	7 162.6	2 867.6	10 030.2	368.6	527.4	10 557.5	4.9	5.0	64.6
August	7 181.9	2 883.7	10 065.6	375.1	533.2	10 598.7	5.0	5.0	64.8
September	7 156.4	2 866.4	10 022.8	385.0	540.9	10 563.6	5.1	5.1	64.5
October	7 098.1	2 905.2	10 003.3	388.1	548.7	10 552.0	5.2	5.2	64.4
November	7 150.8	2 883.0	10 033.8	384.3	537.6	10 571.4	5.1	5.1	64.4
December	7 149.7	2 887.9	10 037.6	383.4	546.4	10 584.0	5.1	5.2	64.4
2006									
January	7 182.5	2 851.9	10 034.3	396.9	557.8	10 592.2	5.2	5.3	64.4
February	7 186.6	2 874.6	10 061.2	393.9	553.9	10 615.1	5.2	5.2	64.5
March	7 173.2	2 914.3	10 087.5	376.3	532.3	10 619.8	5.0	5.0	64.4
April	7 198.2	2 888.0	10 086.3	366.0	541.8	10 628.1	4.8	5.1	64.4
May	7 254.0	2 888.2	10 142.2	371.7	521.3	10 663.5	4.9	4.9	64.5

# LABOUR FORCE STATUS (AGED 15 YEARS & OVER): Original

	EMPLOYED			UNEMPLOYED			UNEMPLOYMENT RATE			Participation rate	
	Full time	Part time	Total	Looking for f/t work	Total	Labour force	Not in labour force	Civilian population aged 15 years and over	Looking for f/t work		Total
MALES											
May 2003	4 433.8	773.0	5 206.9	282.9	345.3	5 552.1	2 225.1	7 777.2	6.0	6.2	71.4
May 2004	4 544.2	801.7	5 345.9	255.5	308.8	5 654.6	2 246.7	7 901.3	5.3	5.5	71.6
2005											
May	4 683.0	813.7	5 496.6	225.6	289.6	5 786.3	2 234.1	8 020.4	4.6	5.0	72.1
June	4 692.1	829.3	5 521.4	218.4	271.2	5 792.5	2 236.2	8 028.7	4.4	4.7	72.1
July	4 715.4	812.1	5 527.5	201.8	252.1	5 779.6	2 259.0	8 038.6	4.1	4.4	71.9
August	4 691.4	806.7	5 498.1	218.7	271.5	5 769.6	2 279.0	8 048.6	4.5	4.7	71.7
September	4 737.9	808.9	5 546.8	232.7	295.9	5 842.7	2 215.7	8 058.5	4.7	5.1	72.5
October	4 683.7	838.6	5 522.3	225.4	281.4	5 803.7	2 265.5	8 069.2	4.6	4.8	71.9
November	4 706.2	793.2	5 499.4	224.6	276.2	5 775.6	2 304.4	8 080.0	4.6	4.8	71.5
December	4 781.1	810.6	5 591.7	226.5	294.6	5 886.3	2 204.4	8 090.8	4.5	5.0	72.8
2006											
January	4 720.7	757.5	5 478.1	265.2	336.1	5 814.2	2 286.0	8 100.2	5.3	5.8	71.8
February	4 745.2	795.3	5 540.5	264.5	338.9	5 879.4	2 230.5	8 109.9	5.3	5.8	72.5
March	4 721.1	855.5	5 576.6	229.7	301.7	5 878.4	2 241.0	8 119.4	4.6	5.1	72.4
April	4 714.7	856.4	5 571.1	220.5	291.5	5 862.6	2 266.4	8 129.1	4.5	5.0	72.1
May	4 742.2	823.9	5 566.2	227.5	282.9	5 849.1	2 289.8	8 138.8	4.6	4.8	71.9
FEMALES											
May 2003	2 272.1	1 973.4	4 245.5	183.2	281.8	4 527.3	3 526.0	8 053.3	7.5	6.2	56.2
May 2004	2 310.1	1 984.8	4 294.9	159.1	254.9	4 549.7	3 629.0	8 178.7	6.4	5.6	55.6
2005											
May	2 395.3	2 077.7	4 473.0	151.9	252.6	4 725.6	3 554.2	8 279.8	6.0	5.3	57.1
June	2 421.2	2 075.9	4 497.2	149.6	243.0	4 740.1	3 547.7	8 287.8	5.8	5.1	57.2
July	2 445.1	2 048.9	4 494.0	142.5	235.0	4 729.0	3 568.7	8 297.7	5.5	5.0	57.0
August	2 387.2	2 091.3	4 478.6	133.5	229.8	4 708.4	3 599.3	8 307.6	5.3	4.9	56.7
September	2 488.9	2 052.1	4 541.1	150.7	250.8	4 791.9	3 525.6	8 317.5	5.7	5.2	57.6
October	2 403.7	2 105.9	4 509.6	137.0	233.0	4 742.7	3 583.4	8 326.0	5.4	4.9	57.0
November	2 433.7	2 083.8	4 517.6	136.3	219.3	4 736.8	3 597.9	8 334.8	5.3	4.6	56.8
December	2 498.3	2 069.5	4 567.8	150.7	247.1	4 814.9	3 528.4	8 343.3	5.7	5.1	57.7
2006											
January	2 475.4	1 966.5	4 441.9	180.3	273.3	4 715.3	3 636.3	8 351.6	6.8	5.8	56.5
February	2 498.1	1 993.9	4 492.0	181.2	289.1	4 781.1	3 578.7	8 359.9	6.8	6.0	57.2
March	2 437.0	2 099.1	4 536.2	155.1	259.7	4 795.9	3 572.2	8 368.1	6.0	5.4	57.3
April	2 450.2	2 069.0	4 519.2	148.1	257.8	4 776.9	3 600.2	8 377.1	5.7	5.4	57.0
May	2 464.7	2 111.4	4 576.1	143.8	240.9	4 817.0	3 569.0	8 386.0	5.5	5.0	57.4
PERSONS											
May 2003	6 705.9	2 746.4	9 452.3	466.1	627.1	10 079.4	5 751.0	15 830.5	6.5	6.2	63.7
May 2004	6 854.2	2 786.5	9 640.7	414.6	563.6	10 204.3	5 875.7	16 080.0	5.7	5.5	63.5
2005											
May	7 078.2	2 891.4	9 969.7	377.5	542.2	10 511.9	5 788.3	16 300.2	5.1	5.2	64.5
June	7 113.3	2 905.2	10 018.5	368.0	514.1	10 532.6	5 783.9	16 316.6	4.9	4.9	64.6
July	7 160.6	2 861.0	10 021.6	344.3	487.1	10 508.7	5 827.7	16 336.3	4.6	4.6	64.3
August	7 078.7	2 898.0	9 976.7	352.2	501.3	10 478.0	5 878.2	16 356.2	4.7	4.8	64.1
September	7 226.8	2 861.1	10 087.9	383.4	546.7	10 634.6	5 741.4	16 376.0	5.0	5.1	64.9
October	7 087.4	2 944.5	10 031.9	362.4	514.5	10 546.4	5 848.9	16 395.3	4.9	4.9	64.3
November	7 139.9	2 877.1	10 017.0	360.8	495.5	10 512.4	5 902.4	16 414.8	4.8	4.7	64.0
December	7 279.5	2 880.1	10 159.5	377.2	541.7	10 701.2	5 732.8	16 434.1	4.9	5.1	65.1
2006											
January	7 196.1	2 724.0	9 920.1	445.5	609.4	10 529.5	5 922.3	16 451.8	5.8	5.8	64.0
February	7 243.3	2 789.2	10 032.5	445.7	628.1	10 660.6	5 809.2	16 469.8	5.8	5.9	64.7
March	7 158.1	2 954.6	10 112.8	384.8	561.5	10 674.2	5 813.3	16 487.5	5.1	5.3	64.7
April	7 164.9	2 925.4	10 090.3	368.6	549.3	10 639.5	5 866.6	16 506.2	4.9	5.2	64.5
May	7 206.9	2 935.3	10 142.2	371.3	523.8	10 666.1	5 858.8	16 524.9	4.9	4.9	64.5



# LABOUR FORCE STATUS (AGED 15 YEARS & OVER)—New South Wales

	TREND					SEASONALLY ADJUSTED					Civilian population aged 15 years and over
	Employed full time	Total employed	Total unemp- loyed	Unemp- loyment rate	Partici- pation rate	Employed full time	Total employed	Total unemp- loyed	Unemp- loyment rate	Partici- pation rate	
	'000	'000	'000	%	%	'000	'000	'000	%	%	'000
MALES											
May 2003	1 488.4	1 738.2	113.2	6.1	70.6	1 489.6	1 738.5	115.0	6.2	70.7	2 622.7
May 2004	1 515.6	1 774.7	97.7	5.2	70.5	1 511.8	1 771.6	96.7	5.2	70.5	2 651.1
2005											
May	1 541.3	1 796.0	95.8	5.1	70.6	1 538.4	1 794.6	99.1	5.2	70.7	2 678.6
June	1 543.7	1 796.2	96.5	5.1	70.6	1 555.6	1 798.3	96.6	5.1	70.7	2 680.1
July	1 541.6	1 794.7	98.1	5.2	70.6	1 537.4	1 789.9	88.5	4.7	70.0	2 682.6
August	1 536.7	1 792.1	100.8	5.3	70.5	1 542.8	1 793.8	102.4	5.4	70.6	2 685.1
September	1 531.6	1 789.5	104.4	5.5	70.5	1 530.3	1 791.6	107.7	5.7	70.7	2 687.6
October	1 528.8	1 788.4	107.8	5.7	70.5	1 516.9	1 784.8	109.5	5.8	70.4	2 689.8
November	1 528.9	1 789.2	110.0	5.8	70.5	1 528.0	1 789.1	108.7	5.7	70.5	2 692.0
December	1 531.6	1 791.4	110.3	5.8	70.6	1 525.7	1 790.1	110.6	5.8	70.5	2 694.2
2006											
January	1 535.6	1 795.2	109.1	5.7	70.6	1 552.4	1 793.3	113.2	5.9	70.7	2 696.3
February	1 539.5	1 799.7	107.5	5.6	70.7	1 538.4	1 802.0	107.9	5.6	70.8	2 698.3
March	1 542.6	1 804.2	106.0	5.6	70.7	1 537.9	1 804.7	99.5	5.2	70.5	2 700.4
April	1 545.4	1 808.3	104.8	5.5	70.8	1 538.5	1 807.8	106.6	5.6	70.8	2 702.5
May	1 547.2	1 811.7	103.8	5.4	70.8	1 555.1	1 814.3	104.5	5.4	70.9	2 704.5
FEMALES											
May 2003	782.2	1 401.0	88.3	5.9	54.9	790.3	1 406.7	88.0	5.9	55.1	2 711.0
May 2004	796.2	1 415.5	86.5	5.8	54.8	787.9	1 415.9	88.2	5.9	54.9	2 740.1
2005											
May	805.6	1 450.0	79.6	5.2	55.4	796.9	1 441.1	77.9	5.1	55.0	2 763.3
June	805.2	1 455.2	76.9	5.0	55.4	820.2	1 455.3	77.8	5.1	55.4	2 765.2
July	805.5	1 459.7	74.6	4.9	55.4	800.5	1 466.8	74.8	4.8	55.7	2 767.9
August	806.9	1 463.3	73.6	4.8	55.5	803.9	1 469.8	70.9	4.6	55.6	2 770.7
September	809.6	1 465.5	73.9	4.8	55.5	811.3	1 461.3	74.3	4.8	55.4	2 773.4
October	813.1	1 466.9	74.6	4.8	55.5	804.9	1 459.8	76.0	4.9	55.3	2 775.2
November	816.8	1 466.3	75.6	4.9	55.5	819.5	1 466.8	73.4	4.8	55.5	2 777.2
December	819.8	1 464.5	76.7	5.0	55.5	828.0	1 469.7	77.1	5.0	55.7	2 779.0
2006											
January	821.4	1 462.6	77.6	5.0	55.4	821.6	1 466.5	83.5	5.4	55.7	2 780.9
February	821.6	1 460.7	78.1	5.1	55.3	823.8	1 461.7	73.1	4.8	55.2	2 782.9
March	821.4	1 459.3	78.5	5.1	55.2	814.0	1 455.4	74.7	4.9	54.9	2 784.8
April	821.4	1 458.9	78.7	5.1	55.2	819.8	1 439.1	87.4	5.7	54.8	2 787.0
May	820.8	1 459.0	78.9	5.1	55.2	825.5	1 479.9	74.2	4.8	55.7	2 789.2
PERSONS											
May 2003	2 270.6	3 139.2	201.5	6.0	62.6	2 279.9	3 145.3	203.0	6.1	62.8	5 333.7
May 2004	2 311.8	3 190.2	184.2	5.5	62.5	2 299.7	3 187.5	184.8	5.5	62.6	5 391.2
2005											
May	2 346.9	3 246.0	175.4	5.1	62.9	2 335.3	3 235.7	177.0	5.2	62.7	5 441.9
June	2 348.9	3 251.3	173.4	5.1	62.9	2 375.7	3 253.6	174.4	5.1	63.0	5 445.3
July	2 347.1	3 254.4	172.7	5.0	62.9	2 337.9	3 256.7	163.2	4.8	62.7	5 450.5
August	2 343.6	3 255.3	174.4	5.1	62.9	2 346.7	3 263.6	173.3	5.0	63.0	5 455.7
September	2 341.2	3 255.1	178.2	5.2	62.9	2 341.5	3 252.9	182.0	5.3	62.9	5 460.9
October	2 341.9	3 255.3	182.4	5.3	62.9	2 321.7	3 244.6	185.4	5.4	62.8	5 465.0
November	2 345.7	3 255.4	185.6	5.4	62.9	2 347.5	3 255.9	182.2	5.3	62.9	5 469.2
December	2 351.4	3 256.0	187.0	5.4	62.9	2 353.7	3 259.8	187.7	5.4	63.0	5 473.3
2006											
January	2 357.0	3 257.8	186.7	5.4	62.9	2 374.0	3 259.8	196.7	5.7	63.1	5 477.2
February	2 361.1	3 260.4	185.6	5.4	62.9	2 362.2	3 263.7	181.0	5.3	62.8	5 481.2
March	2 364.1	3 263.5	184.5	5.4	62.9	2 351.9	3 260.1	174.2	5.1	62.6	5 485.1
April	2 366.8	3 267.2	183.5	5.3	62.9	2 358.3	3 247.0	194.0	5.6	62.7	5 489.4
May	2 368.0	3 270.7	182.7	5.3	62.9	2 380.5	3 294.2	178.7	5.1	63.2	5 493.7

# LABOUR FORCE STATUS (AGED 15 YEARS & OVER)—Victoria

	TREND					SEASONALLY ADJUSTED					Civilian population aged 15 years and over
	Employed full time	Total employed	Total unemp- loyed	Unemp- loyment rate	Partici- pation rate	Employed full time	Total employed	Total unemp- loyed	Unemp- loyment rate	Partici- pation rate	
	'000	'000	'000	%	%	'000	'000	'000	%	%	'000
MALES											
May 2003	1 098.4	1 289.2	80.1	5.8	71.2	1 096.7	1 288.0	82.0	6.0	71.2	1 924.0
May 2004	1 130.8	1 327.5	81.4	5.8	72.0	1 128.7	1 326.9	81.6	5.8	72.0	1 955.7
2005											
May	1 161.3	1 372.2	72.9	5.0	72.8	1 159.6	1 371.4	74.1	5.1	72.8	1 984.5
June	1 165.7	1 376.6	71.7	4.9	72.9	1 163.0	1 376.8	71.6	4.9	72.9	1 987.1
July	1 169.3	1 379.1	71.1	4.9	72.9	1 172.3	1 378.9	71.5	4.9	72.9	1 989.3
August	1 170.9	1 378.5	71.3	4.9	72.8	1 177.5	1 390.0	66.2	4.5	73.1	1 991.6
September	1 169.7	1 375.3	72.0	5.0	72.6	1 165.7	1 370.4	73.8	5.1	72.4	1 993.8
October	1 166.6	1 370.5	73.0	5.1	72.3	1 167.3	1 370.5	74.0	5.1	72.4	1 996.2
November	1 162.4	1 366.1	74.0	5.1	72.1	1 166.4	1 366.5	76.1	5.3	72.2	1 998.5
December	1 158.7	1 364.1	74.5	5.2	71.9	1 156.0	1 359.5	74.9	5.2	71.7	2 000.8
2006											
January	1 156.9	1 365.0	74.3	5.2	71.9	1 150.8	1 358.9	70.3	4.9	71.4	2 002.9
February	1 156.9	1 368.0	73.6	5.1	71.9	1 154.7	1 370.9	75.5	5.2	72.1	2 005.0
March	1 158.0	1 371.7	72.8	5.0	72.0	1 160.7	1 371.9	75.6	5.2	72.1	2 007.1
April	1 159.5	1 375.1	72.0	5.0	72.0	1 160.6	1 379.7	70.7	4.9	72.2	2 009.3
May	1 161.3	1 378.5	71.0	4.9	72.1	1 164.7	1 378.7	69.1	4.8	72.0	2 011.5
FEMALES											
May 2003	559.8	1 057.7	67.3	6.0	55.6	560.4	1 060.9	70.1	6.2	55.9	2 022.4
May 2004	585.6	1 069.6	63.0	5.6	55.1	588.1	1 067.0	55.7	5.0	54.7	2 053.8
2005											
May	596.1	1 108.3	68.7	5.8	56.6	601.5	1 120.1	70.1	5.9	57.3	2 078.5
June	595.9	1 106.7	69.7	5.9	56.5	599.1	1 112.6	66.5	5.6	56.7	2 080.7
July	595.2	1 105.6	70.4	6.0	56.5	593.7	1 092.2	71.8	6.2	55.9	2 083.0
August	594.3	1 105.9	70.6	6.0	56.4	586.6	1 108.2	70.8	6.0	56.5	2 085.3
September	593.9	1 108.0	70.4	6.0	56.5	596.8	1 099.3	71.9	6.1	56.1	2 087.5
October	594.4	1 112.0	69.9	5.9	56.6	599.5	1 119.8	70.6	5.9	57.0	2 089.6
November	595.9	1 117.2	69.0	5.8	56.7	593.8	1 118.1	66.7	5.6	56.6	2 091.8
December	598.1	1 122.1	68.0	5.7	56.8	592.3	1 122.7	66.7	5.6	56.8	2 093.9
2006											
January	600.0	1 125.5	67.2	5.6	56.9	601.0	1 124.3	70.6	5.9	57.0	2 095.9
February	601.5	1 127.9	66.7	5.6	56.9	607.2	1 130.1	65.9	5.5	57.0	2 097.8
March	602.7	1 129.8	66.2	5.5	57.0	601.6	1 129.8	62.8	5.3	56.8	2 099.8
April	603.5	1 131.2	65.9	5.5	57.0	605.1	1 130.2	69.6	5.8	57.1	2 102.1
May	604.1	1 132.6	65.7	5.5	57.0	599.9	1 132.6	64.2	5.4	56.9	2 104.4
PERSONS											
May 2003	1 658.2	2 346.9	147.3	5.9	63.2	1 657.1	2 348.9	152.1	6.1	63.4	3 946.4
May 2004	1 716.5	2 397.1	144.4	5.7	63.4	1 716.8	2 393.9	137.4	5.4	63.1	4 009.5
2005											
May	1 757.4	2 480.4	141.6	5.4	64.5	1 761.1	2 491.5	144.2	5.5	64.9	4 063.1
June	1 761.7	2 483.3	141.4	5.4	64.5	1 762.1	2 489.4	138.1	5.3	64.6	4 067.8
July	1 764.5	2 484.7	141.5	5.4	64.5	1 766.0	2 471.1	143.3	5.5	64.2	4 072.3
August	1 765.2	2 484.4	141.9	5.4	64.4	1 764.1	2 498.2	137.0	5.2	64.6	4 076.8
September	1 763.7	2 483.2	142.5	5.4	64.3	1 762.4	2 469.6	145.7	5.6	64.1	4 081.4
October	1 761.0	2 482.5	142.9	5.4	64.3	1 766.9	2 490.3	144.6	5.5	64.5	4 085.8
November	1 758.2	2 483.4	143.0	5.4	64.2	1 760.2	2 484.5	142.9	5.4	64.2	4 090.3
December	1 756.8	2 486.2	142.5	5.4	64.2	1 748.4	2 482.2	141.6	5.4	64.1	4 094.7
2006											
January	1 756.9	2 490.5	141.5	5.4	64.2	1 751.9	2 483.2	140.9	5.4	64.0	4 098.8
February	1 758.5	2 495.9	140.3	5.3	64.2	1 761.9	2 501.1	141.4	5.4	64.4	4 102.8
March	1 760.7	2 501.4	139.0	5.3	64.3	1 762.4	2 501.7	138.3	5.2	64.3	4 106.9
April	1 762.9	2 506.3	137.8	5.2	64.3	1 765.8	2 510.0	140.3	5.3	64.5	4 111.4
May	1 765.3	2 511.1	136.7	5.2	64.4	1 764.6	2 511.4	133.3	5.0	64.3	4 115.9

# LABOUR FORCE STATUS (AGED 15 YEARS & OVER)—Queensland

	TREND					SEASONALLY ADJUSTED					Civilian population aged 15 years and over
	Employed full time	Total employed	Total unemp- loyed	Unemp- loyment rate	Partici- pation rate	Employed full time	Total employed	Total unemp- loyed	Unemp- loyment rate	Partici- pation rate	
	'000	'000	'000	%	%	'000	'000	'000	%	%	
MALES											
May 2003	839.5	989.7	70.7	6.7	71.9	844.2	992.8	68.7	6.5	72.0	1 474.0
May 2004	892.5	1 038.3	62.0	5.6	72.8	892.3	1 041.3	59.9	5.4	72.8	1 512.3
2005											
May	937.8	1 092.8	49.3	4.3	73.7	930.8	1 083.5	58.8	5.1	73.7	1 550.2
June	941.0	1 095.6	50.1	4.4	73.8	945.0	1 098.4	43.5	3.8	73.5	1 552.7
July	943.3	1 097.7	50.5	4.4	73.8	946.2	1 098.0	48.7	4.2	73.7	1 555.5
August	945.3	1 099.1	50.5	4.4	73.8	944.1	1 102.1	53.9	4.7	74.2	1 558.4
September	946.4	1 099.8	50.7	4.4	73.7	944.7	1 100.2	49.5	4.3	73.6	1 561.2
October	946.8	1 099.8	51.8	4.5	73.6	946.9	1 098.0	51.7	4.5	73.5	1 564.9
November	946.2	1 099.6	53.3	4.6	73.5	949.0	1 098.6	51.8	4.5	73.3	1 568.7
December	945.3	1 099.7	54.3	4.7	73.4	943.9	1 100.5	53.1	4.6	73.4	1 572.5
2006											
January	944.7	1 100.5	54.5	4.7	73.3	944.7	1 098.9	57.7	5.0	73.4	1 575.6
February	944.3	1 101.6	54.2	4.7	73.2	943.7	1 101.1	57.0	4.9	73.3	1 579.0
March	944.3	1 102.7	53.4	4.6	73.1	943.7	1 104.9	54.2	4.7	73.3	1 582.1
April	944.7	1 103.6	52.4	4.5	72.9	941.7	1 104.1	46.1	4.0	72.6	1 585.1
May	945.3	1 104.2	51.4	4.4	72.8	950.2	1 103.2	52.8	4.6	72.8	1 588.3
FEMALES											
May 2003	433.0	812.7	64.4	7.3	57.9	436.9	818.6	63.1	7.2	58.2	1 515.0
May 2004	452.9	833.5	55.4	6.2	57.2	449.3	833.3	53.6	6.0	57.1	1 554.4
2005											
May	491.1	893.5	52.6	5.6	59.6	481.9	888.3	52.0	5.5	59.2	1 587.3
June	492.4	895.4	53.8	5.7	59.7	497.5	893.1	53.4	5.6	59.5	1 589.6
July	492.7	896.9	54.3	5.7	59.7	496.2	901.8	54.8	5.7	60.1	1 592.4
August	491.4	897.8	54.0	5.7	59.7	491.2	896.3	55.6	5.8	59.7	1 595.2
September	489.1	897.7	53.2	5.6	59.5	494.1	902.4	53.8	5.6	59.8	1 597.9
October	486.3	896.8	52.4	5.5	59.3	481.8	895.2	51.7	5.5	59.2	1 600.6
November	483.9	895.7	52.0	5.5	59.1	482.3	896.4	49.6	5.2	59.0	1 603.4
December	483.5	895.7	51.9	5.5	59.0	480.9	892.0	50.6	5.4	58.7	1 606.1
2006											
January	485.8	897.5	52.3	5.5	59.0	485.5	896.4	53.8	5.7	59.1	1 608.8
February	489.7	900.7	52.7	5.5	59.2	493.3	897.4	55.1	5.8	59.1	1 611.4
March	494.3	904.6	53.0	5.5	59.3	486.5	909.2	52.2	5.4	59.6	1 614.1
April	499.2	908.6	53.1	5.5	59.5	502.3	906.8	51.5	5.4	59.3	1 616.6
May	503.6	912.2	53.2	5.5	59.7	510.2	916.9	53.5	5.5	59.9	1 619.1
PERSONS											
May 2003	1 272.6	1 802.4	135.1	7.0	64.8	1 281.1	1 811.5	131.8	6.8	65.0	2 989.0
May 2004	1 345.4	1 871.8	117.5	5.9	64.9	1 341.6	1 874.6	113.5	5.7	64.8	3 066.7
2005											
May	1 428.9	1 986.3	101.9	4.9	66.6	1 412.6	1 971.8	110.8	5.3	66.4	3 137.5
June	1 433.4	1 991.0	103.9	5.0	66.7	1 442.6	1 991.5	96.9	4.6	66.5	3 142.3
July	1 436.0	1 994.6	104.8	5.0	66.7	1 442.4	1 999.8	103.4	4.9	66.8	3 147.9
August	1 436.7	1 997.0	104.5	5.0	66.6	1 435.3	1 998.4	109.5	5.2	66.8	3 153.5
September	1 435.6	1 997.5	103.9	4.9	66.5	1 438.8	2 002.5	103.3	4.9	66.7	3 159.1
October	1 433.0	1 996.7	104.2	5.0	66.4	1 428.7	1 993.2	103.4	4.9	66.2	3 165.5
November	1 430.0	1 995.3	105.3	5.0	66.2	1 431.3	1 995.0	101.4	4.8	66.1	3 172.1
December	1 428.9	1 995.4	106.2	5.1	66.1	1 424.8	1 992.5	103.7	4.9	65.9	3 178.6
2006											
January	1 430.5	1 998.0	106.8	5.1	66.1	1 430.2	1 995.3	111.5	5.3	66.2	3 184.4
February	1 434.0	2 002.4	106.9	5.1	66.1	1 437.0	1 998.5	112.1	5.3	66.2	3 190.4
March	1 438.7	2 007.3	106.4	5.0	66.1	1 430.2	2 014.1	106.4	5.0	66.3	3 196.2
April	1 443.9	2 012.2	105.5	5.0	66.2	1 444.1	2 010.9	97.6	4.6	65.9	3 201.7
May	1 448.9	2 016.4	104.6	4.9	66.2	1 460.4	2 020.0	106.3	5.0	66.3	3 207.4

# LABOUR FORCE STATUS (AGED 15 YEARS & OVER)—South Australia

	TREND					SEASONALLY ADJUSTED					Civilian population aged 15 years and over
	Employed full time	Total employed	Total unemp- loyed	Unemp- loyment rate	Partici- pation rate	Employed full time	Total employed	Total unemp- loyed	Unemp- loyment rate	Partici- pation rate	
	'000	'000	'000	%	%	'000	'000	'000	%	%	
MALES											
May 2003	338.3	394.8	28.5	6.7	69.9	337.7	394.9	29.0	6.8	70.0	605.9
May 2004	334.7	397.8	28.3	6.7	69.7	333.5	396.6	28.4	6.7	69.5	611.7
2005											
May	343.7	406.2	21.8	5.1	69.4	344.0	406.7	21.4	5.0	69.4	616.6
June	343.2	406.2	21.8	5.1	69.4	341.9	406.0	21.3	5.0	69.3	617.0
July	342.6	405.8	22.2	5.2	69.3	340.2	405.2	22.1	5.2	69.2	617.4
August	342.3	405.3	22.7	5.3	69.3	344.0	404.6	23.0	5.4	69.2	617.9
September	342.4	404.9	23.0	5.4	69.2	343.3	406.3	23.6	5.5	69.5	618.4
October	342.6	404.8	23.0	5.4	69.1	342.2	404.1	24.4	5.7	69.2	619.0
November	342.5	404.8	22.9	5.4	69.0	341.1	404.6	22.6	5.3	69.0	619.6
December	342.2	405.0	23.0	5.4	69.0	344.3	405.4	20.8	4.9	68.7	620.2
2006											
January	341.7	405.3	23.3	5.4	69.1	341.1	402.4	23.7	5.6	68.7	620.6
February	341.3	405.5	23.7	5.5	69.1	341.1	409.7	22.8	5.3	69.6	621.1
March	340.9	405.7	24.1	5.6	69.1	340.1	405.0	26.4	6.1	69.4	621.6
April	340.6	405.9	24.4	5.7	69.2	341.2	404.2	24.7	5.8	68.9	622.1
May	340.3	405.9	24.6	5.7	69.2	340.3	406.6	23.2	5.4	69.0	622.6
FEMALES											
May 2003	166.3	322.7	19.5	5.7	54.3	166.8	323.9	19.7	5.7	54.5	630.5
May 2004	157.9	320.1	19.5	5.8	53.4	155.8	319.4	19.3	5.7	53.3	635.6
2005											
May	168.8	334.5	17.1	4.9	55.0	168.9	334.3	17.1	4.9	55.0	639.0
June	169.1	335.2	16.4	4.7	55.0	168.3	335.2	17.5	5.0	55.2	639.3
July	168.9	335.8	15.8	4.5	55.0	169.9	338.2	14.0	4.0	55.1	639.7
August	168.6	336.3	15.3	4.4	54.9	171.4	336.8	15.0	4.3	55.0	640.1
September	168.5	336.7	15.2	4.3	54.9	168.7	335.5	15.6	4.4	54.8	640.5
October	168.8	337.2	15.6	4.4	55.0	162.2	334.3	15.3	4.4	54.5	641.0
November	169.6	337.7	16.1	4.6	55.2	171.8	338.6	15.2	4.3	55.2	641.5
December	170.8	338.2	16.6	4.7	55.3	171.1	339.7	19.2	5.3	55.9	642.0
2006											
January	171.9	338.6	17.0	4.8	55.4	174.5	340.3	15.3	4.3	55.4	642.5
February	172.7	338.7	17.2	4.8	55.4	172.2	338.1	18.2	5.1	55.4	642.9
March	172.9	338.5	17.4	4.9	55.3	173.0	336.2	16.7	4.7	54.9	643.3
April	173.0	338.3	17.6	4.9	55.3	171.8	339.7	17.9	5.0	55.6	643.8
May	172.6	338.0	17.6	5.0	55.2	172.6	337.8	17.5	4.9	55.2	644.3
PERSONS											
May 2003	504.5	717.6	48.1	6.3	61.9	504.5	718.8	48.7	6.3	62.1	1 236.4
May 2004	492.6	717.9	47.9	6.3	61.4	489.3	716.0	47.7	6.2	61.2	1 247.3
2005											
May	512.5	740.6	38.9	5.0	62.1	512.9	741.0	38.4	4.9	62.1	1 255.6
June	512.2	741.4	38.2	4.9	62.1	510.2	741.2	38.8	5.0	62.1	1 256.3
July	511.5	741.7	37.9	4.9	62.0	510.1	743.4	36.2	4.6	62.0	1 257.1
August	510.9	741.6	38.0	4.9	62.0	515.3	741.4	37.9	4.9	62.0	1 258.0
September	510.9	741.6	38.2	4.9	61.9	512.0	741.8	39.2	5.0	62.0	1 258.9
October	511.4	742.0	38.6	4.9	61.9	504.3	738.5	39.7	5.1	61.8	1 260.0
November	512.1	742.5	39.1	5.0	62.0	512.9	743.2	37.8	4.8	61.9	1 261.1
December	512.9	743.3	39.7	5.1	62.0	515.4	745.1	40.0	5.1	62.2	1 262.2
2006											
January	513.6	743.9	40.3	5.1	62.1	515.7	742.7	39.1	5.0	61.9	1 263.1
February	513.9	744.2	40.9	5.2	62.1	513.3	747.7	41.1	5.2	62.4	1 264.0
March	513.9	744.2	41.5	5.3	62.1	513.1	741.2	43.1	5.5	62.0	1 264.9
April	513.6	744.2	41.9	5.3	62.1	512.9	744.0	42.6	5.4	62.1	1 265.9
May	512.9	743.9	42.3	5.4	62.1	512.9	744.4	40.7	5.2	62.0	1 266.8

# LABOUR FORCE STATUS (AGED 15 YEARS & OVER)—Western Australia

	TREND					SEASONALLY ADJUSTED					Civilian population aged 15 years and over
	Employed full time	Total employed	Total unemp- loyed	Unemp- loyment rate	Partici- pation rate	Employed full time	Total employed	Total unemp- loyed	Unemp- loyment rate	Partici- pation rate	
	'000	'000	'000	%	%	'000	'000	'000	%	%	
MALES											
May 2003	463.0	542.7	34.0	5.9	75.0	463.3	541.7	34.0	5.9	74.9	768.6
May 2004	469.8	551.1	27.6	4.8	73.8	469.8	554.3	28.9	4.9	74.3	784.4
2005											
May	499.9	582.4	26.9	4.4	76.2	503.3	584.9	25.7	4.2	76.4	799.1
June	501.9	584.8	26.8	4.4	76.4	492.1	580.9	29.0	4.8	76.2	800.2
July	503.6	587.0	26.2	4.3	76.5	504.4	586.2	27.2	4.4	76.5	801.7
August	504.8	589.0	25.3	4.1	76.5	512.0	589.5	25.5	4.1	76.6	803.1
September	505.4	590.4	24.5	4.0	76.4	507.4	595.7	22.9	3.7	76.9	804.6
October	505.9	591.5	23.9	3.9	76.4	502.2	589.2	23.2	3.8	76.0	806.0
November	506.6	592.6	23.7	3.8	76.3	504.1	590.5	22.6	3.7	75.9	807.3
December	507.7	593.7	23.7	3.8	76.4	507.3	594.2	25.0	4.0	76.6	808.7
2006											
January	509.5	595.1	23.7	3.8	76.4	508.7	593.6	24.3	3.9	76.3	810.0
February	511.7	596.6	23.2	3.7	76.4	513.5	595.6	24.3	3.9	76.4	811.3
March	513.3	597.9	22.4	3.6	76.3	516.4	603.2	21.9	3.5	76.9	812.7
April	514.5	598.9	21.5	3.5	76.2	513.7	598.3	21.6	3.5	76.1	814.1
May	515.1	599.3	20.6	3.3	76.1	512.6	596.5	18.9	3.1	75.5	815.4
FEMALES											
May 2003	212.2	418.7	25.7	5.8	57.0	215.4	418.2	25.5	5.7	56.9	779.7
May 2004	221.4	431.4	25.1	5.5	57.3	224.8	434.8	25.4	5.5	57.8	796.1
2005											
May	238.5	457.8	25.5	5.3	59.7	234.5	458.5	25.1	5.2	59.8	809.1
June	239.7	460.0	24.8	5.1	59.8	238.8	459.6	24.8	5.1	59.8	810.1
July	239.7	461.4	23.9	4.9	59.8	243.5	461.4	24.5	5.0	59.9	811.5
August	238.8	462.3	23.0	4.7	59.7	242.3	465.2	22.5	4.6	60.0	812.9
September	237.6	462.8	22.2	4.6	59.6	239.8	461.4	22.1	4.6	59.4	814.3
October	236.7	463.0	21.7	4.5	59.5	228.8	462.4	20.8	4.3	59.3	815.3
November	236.5	463.1	21.5	4.4	59.4	233.4	462.2	21.8	4.5	59.3	816.2
December	237.1	463.3	21.6	4.5	59.3	237.9	462.0	22.2	4.6	59.3	817.1
2006											
January	238.2	463.8	21.7	4.5	59.3	243.6	467.8	20.5	4.2	59.7	818.0
February	238.9	464.5	21.6	4.4	59.4	240.2	462.4	22.1	4.6	59.2	818.9
March	238.9	465.2	21.4	4.4	59.3	238.1	464.1	23.0	4.7	59.4	819.9
April	238.6	465.8	21.1	4.3	59.3	235.4	465.9	20.5	4.2	59.3	820.9
May	237.7	466.4	20.7	4.2	59.3	237.6	467.7	19.5	4.0	59.3	822.0
PERSONS											
May 2003	675.3	961.4	59.6	5.8	66.0	678.7	959.9	59.4	5.8	65.8	1 548.2
May 2004	691.2	982.5	52.7	5.1	65.5	694.5	989.1	54.2	5.2	66.0	1 580.5
2005											
May	738.4	1 040.2	52.4	4.8	67.9	737.8	1 043.4	50.9	4.6	68.0	1 608.2
June	741.6	1 044.8	51.6	4.7	68.1	730.9	1 040.5	53.8	4.9	68.0	1 610.3
July	743.3	1 048.4	50.1	4.6	68.1	747.9	1 047.6	51.7	4.7	68.1	1 613.2
August	743.6	1 051.2	48.3	4.4	68.0	754.3	1 054.7	48.0	4.4	68.2	1 616.0
September	743.0	1 053.2	46.7	4.2	68.0	747.2	1 057.1	45.0	4.1	68.1	1 618.9
October	742.6	1 054.5	45.6	4.1	67.9	730.9	1 051.7	43.9	4.0	67.6	1 621.2
November	743.1	1 055.6	45.2	4.1	67.8	737.5	1 052.7	44.4	4.0	67.6	1 623.5
December	744.9	1 057.1	45.3	4.1	67.8	745.2	1 056.3	47.2	4.3	67.9	1 625.8
2006											
January	747.7	1 058.9	45.4	4.1	67.8	752.3	1 061.3	44.8	4.0	67.9	1 628.0
February	750.6	1 061.1	44.8	4.1	67.8	753.7	1 058.0	46.4	4.2	67.7	1 630.3
March	752.3	1 063.1	43.8	4.0	67.8	754.6	1 067.3	44.9	4.0	68.1	1 632.5
April	753.1	1 064.7	42.6	3.8	67.7	749.2	1 064.3	42.1	3.8	67.7	1 635.0
May	752.8	1 065.7	41.2	3.7	67.6	750.2	1 064.2	38.4	3.5	67.3	1 637.4

# LABOUR FORCE STATUS (AGED 15 YEARS & OVER)—Tasmania

	TREND					SEASONALLY ADJUSTED					Civilian population aged 15 years and over
	Employed full time	Total employed	Total unemp- loyed	Unemp- loyment rate	Partici- pation rate	Employed full time	Total employed	Total unemp- loyed	Unemp- loyment rate	Partici- pation rate	
	'000	'000	'000	%	%	'000	'000	'000	%	%	
MALES											
May 2003	96.0	112.2	10.9	8.8	66.6	96.7	112.9	11.1	8.9	67.0	185.0
May 2004	100.9	117.3	9.4	7.4	67.5	100.8	117.0	8.7	6.9	66.9	187.8
2005											
May	98.6	119.0	7.8	6.1	66.7	98.0	119.0	7.4	5.8	66.4	190.2
June	98.6	119.1	7.8	6.1	66.6	99.3	119.9	7.5	5.9	66.9	190.4
July	98.7	119.2	7.8	6.2	66.7	97.7	118.1	7.9	6.3	66.2	190.5
August	99.3	119.8	8.0	6.2	67.0	99.3	119.8	7.6	6.0	66.8	190.7
September	100.0	120.7	8.2	6.4	67.5	100.0	120.2	8.2	6.4	67.2	190.9
October	100.9	121.7	8.5	6.5	68.2	100.6	121.2	8.8	6.8	68.1	191.0
November	101.6	122.6	8.8	6.7	68.7	102.0	122.8	8.9	6.7	68.9	191.0
December	102.0	123.0	8.9	6.7	69.0	102.9	124.9	8.7	6.5	69.9	191.1
2006											
January	102.1	123.0	8.9	6.8	69.0	101.8	123.8	9.2	6.9	69.6	191.2
February	102.1	122.7	9.0	6.8	68.8	101.9	121.9	9.1	7.0	68.5	191.3
March	102.0	122.4	9.0	6.9	68.7	101.9	120.7	8.5	6.6	67.5	191.4
April	101.9	122.1	9.1	7.0	68.5	101.7	122.8	8.9	6.7	68.7	191.5
May	101.8	121.8	9.2	7.1	68.4	101.9	122.3	9.9	7.5	69.0	191.6
FEMALES											
May 2003	45.7	92.4	7.3	7.3	51.3	46.1	93.8	7.4	7.3	52.1	194.2
May 2004	46.9	95.5	6.1	6.0	51.5	45.6	94.9	6.5	6.4	51.4	197.1
2005											
May	50.4	99.7	6.0	5.7	53.1	49.9	98.9	5.7	5.4	52.5	199.2
June	50.8	100.1	6.1	5.7	53.3	50.8	99.7	5.9	5.6	53.0	199.4
July	51.0	100.5	6.3	5.9	53.6	52.1	101.2	5.7	5.3	53.6	199.5
August	50.9	100.9	6.6	6.2	53.9	51.3	101.5	6.4	5.9	54.0	199.6
September	50.3	101.1	7.0	6.5	54.1	51.4	101.6	6.6	6.1	54.1	199.7
October	49.5	101.2	7.2	6.6	54.3	47.3	100.2	8.9	8.2	54.6	199.8
November	48.7	101.2	7.2	6.7	54.2	49.4	101.2	8.0	7.3	54.6	199.9
December	48.3	101.2	7.0	6.5	54.1	48.0	101.0	5.3	5.0	53.2	200.0
2006											
January	48.3	101.4	6.8	6.3	54.0	47.9	102.0	6.7	6.2	54.3	200.1
February	48.6	101.5	6.5	6.0	54.0	48.3	101.1	6.7	6.2	53.8	200.2
March	49.0	101.7	6.4	5.9	54.0	49.6	102.2	6.7	6.2	54.3	200.3
April	49.4	101.8	6.3	5.8	53.9	48.8	101.0	6.3	5.9	53.5	200.5
May	49.7	101.9	6.3	5.8	54.0	50.6	102.5	6.2	5.7	54.2	200.6
PERSONS											
May 2003	141.7	204.7	18.1	8.1	58.8	142.8	206.7	18.4	8.2	59.4	379.2
May 2004	147.8	212.8	15.5	6.8	59.3	146.4	211.9	15.2	6.7	59.0	384.9
2005											
May	149.0	218.8	13.8	5.9	59.7	148.0	217.9	13.0	5.6	59.3	389.5
June	149.4	219.2	13.9	6.0	59.8	150.0	219.6	13.4	5.7	59.8	389.7
July	149.8	219.8	14.1	6.0	60.0	149.8	219.4	13.7	5.9	59.7	390.0
August	150.1	220.7	14.6	6.2	60.3	150.6	221.3	13.9	5.9	60.3	390.3
September	150.3	221.8	15.2	6.4	60.7	151.4	221.7	14.7	6.2	60.5	390.6
October	150.3	222.9	15.7	6.6	61.1	147.9	221.4	17.8	7.4	61.2	390.8
November	150.3	223.8	16.0	6.7	61.3	151.4	224.0	16.9	7.0	61.6	390.9
December	150.3	224.3	15.9	6.6	61.4	150.9	226.0	14.1	5.9	61.4	391.1
2006											
January	150.4	224.4	15.7	6.5	61.4	149.8	225.8	15.9	6.6	61.8	391.3
February	150.6	224.3	15.5	6.5	61.2	150.1	223.0	15.8	6.6	61.0	391.5
March	150.9	224.1	15.4	6.4	61.1	151.6	222.8	15.2	6.4	60.8	391.7
April	151.3	223.9	15.4	6.4	61.1	150.4	223.7	15.2	6.4	61.0	391.9
May	151.4	223.7	15.6	6.5	61.0	152.5	224.8	16.1	6.7	61.4	392.2

	TREND					Civilian population aged 15 years and over
	Employed full time	Total employed	Total unemployed	Unemployment rate	Participation rate	
	'000	'000	'000	%	%	'000
MALES						
May 2003	44.6	54.4	3.7	6.4	78.7	73.8
May 2004	43.5	52.2	3.4	6.1	75.3	73.9
2005						
May	42.5	50.7	3.0	5.6	71.3	75.4
June	42.4	50.8	2.8	5.2	71.0	75.4
July	42.6	51.2	2.6	4.8	71.1	75.6
August	43.0	51.8	2.6	4.7	71.7	75.8
September	43.6	52.5	2.7	4.9	72.6	75.9
October	44.3	53.0	3.0	5.3	73.4	76.2
November	44.8	53.2	3.3	5.8	73.9	76.5
December	45.1	53.2	3.6	6.3	74.1	76.7
2006						
January	45.2	53.1	3.8	6.7	74.0	76.9
February	45.2	53.1	3.8	6.7	73.7	77.2
March	45.3	53.1	3.8	6.6	73.5	77.4
April	45.5	53.3	3.6	6.4	73.3	77.6
May	45.6	53.4	3.5	6.1	73.2	77.9
FEMALES						
May 2003	28.4	41.8	3.2	7.1	65.0	69.3
May 2004	29.6	44.2	2.6	5.5	67.1	69.7
2005						
May	30.2	43.0	2.2	4.9	64.1	70.6
June	30.8	43.5	2.2	4.7	64.6	70.7
July	31.3	44.0	2.1	4.6	65.1	70.9
August	31.4	44.4	2.1	4.6	65.4	71.0
September	31.3	44.4	2.2	4.8	65.5	71.2
October	31.0	44.3	2.4	5.2	65.4	71.4
November	30.8	44.2	2.6	5.6	65.4	71.7
December	30.9	44.2	2.8	5.9	65.5	71.9
2006						
January	31.2	44.4	2.9	6.1	65.7	72.0
February	31.5	44.8	2.9	6.1	66.1	72.1
March	31.9	45.1	2.9	6.0	66.5	72.2
April	32.2	45.5	2.9	6.0	66.9	72.3
May	32.4	45.9	2.8	5.9	67.3	72.4
PERSONS						
May 2003	72.9	96.3	6.9	6.7	72.1	143.1
May 2004	73.1	96.4	6.0	5.9	71.3	143.6
2005						
May	72.7	93.8	5.2	5.3	67.8	146.0
June	73.3	94.3	4.9	4.9	67.9	146.1
July	73.9	95.2	4.7	4.7	68.2	146.4
August	74.4	96.2	4.7	4.6	68.7	146.8
September	74.9	96.9	4.9	4.8	69.2	147.1
October	75.3	97.3	5.4	5.2	69.5	147.6
November	75.7	97.4	5.9	5.7	69.8	148.1
December	76.0	97.5	6.4	6.1	69.9	148.6
2006						
January	76.4	97.6	6.7	6.4	70.0	148.9
February	76.8	97.8	6.7	6.4	70.0	149.3
March	77.2	98.3	6.7	6.3	70.1	149.6
April	77.6	98.8	6.5	6.2	70.2	149.9
May	78.0	99.3	6.3	6.0	70.4	150.3

	TREND					Civilian population aged 15 years and over
	Employed full time	Total employed	Total unemployed	Unemployment rate	Participation rate	
	'000	'000	'000	%	%	'000
MALES						
May 2003	75.1	90.6	4.5	4.7	77.1	123.3
May 2004	76.9	92.6	3.7	3.8	77.3	124.4
2005						
May	79.3	93.9	3.1	3.2	77.1	125.8
June	79.4	94.0	3.0	3.1	77.0	126.0
July	79.5	94.0	3.0	3.1	76.9	126.0
August	79.4	94.1	3.0	3.1	76.9	126.1
September	79.2	94.1	3.0	3.1	77.0	126.1
October	79.1	94.3	3.0	3.1	77.0	126.3
November	79.1	94.5	3.0	3.0	77.1	126.4
December	79.3	94.7	3.0	3.1	77.3	126.5
2006						
January	79.6	95.1	3.1	3.2	77.5	126.6
February	80.0	95.3	3.3	3.4	77.8	126.7
March	80.3	95.5	3.5	3.6	78.1	126.8
April	80.5	95.7	3.8	3.8	78.4	126.9
May	80.7	95.8	4.1	4.1	78.6	127.0
FEMALES						
May 2003	51.8	83.3	3.5	4.1	66.2	131.2
May 2004	52.6	84.3	2.9	3.4	66.1	132.0
2005						
May	55.4	86.8	2.9	3.2	67.6	132.7
June	55.2	86.6	2.9	3.3	67.5	132.7
July	54.7	86.5	3.0	3.3	67.4	132.8
August	54.1	86.3	3.0	3.4	67.2	132.9
September	53.6	85.9	3.1	3.5	66.9	132.9
October	53.3	85.5	3.2	3.6	66.6	133.1
November	53.3	85.2	3.2	3.6	66.4	133.2
December	53.8	85.3	3.1	3.6	66.3	133.3
2006						
January	54.5	85.7	3.0	3.4	66.5	133.4
February	55.5	86.4	2.8	3.2	66.8	133.6
March	56.4	87.2	2.7	3.0	67.2	133.7
April	57.3	88.1	2.5	2.8	67.7	133.9
May	58.1	88.9	2.5	2.7	68.2	134.0
PERSONS						
May 2003	126.8	173.9	8.0	4.4	71.5	254.5
May 2004	129.5	177.0	6.6	3.6	71.5	256.4
2005						
May	134.7	180.8	6.0	3.2	72.3	258.4
June	134.6	180.6	5.9	3.2	72.1	258.7
July	134.2	180.5	5.9	3.2	72.0	258.8
August	133.5	180.3	6.0	3.2	71.9	258.9
September	132.8	180.1	6.1	3.3	71.8	259.1
October	132.4	179.8	6.1	3.3	71.7	259.3
November	132.4	179.7	6.2	3.3	71.6	259.6
December	133.0	180.0	6.1	3.3	71.6	259.8
2006						
January	134.2	180.7	6.1	3.3	71.9	260.1
February	135.4	181.7	6.1	3.3	72.2	260.3
March	136.7	182.7	6.2	3.3	72.5	260.5
April	137.8	183.8	6.3	3.3	72.9	260.8
May	138.8	184.7	6.5	3.4	73.3	261.1



Original—May 2006

	EMPLOYED			UNEMPLOYED		Labour force	Not in labour force	Civilian population aged 15 years and over	UNEMPLOYMENT RATE		Participation rate
	Full time	Part time	Total	Looking for f/t work	Total				Looking for f/t work	Total	
	'000	'000	'000	'000	'000	'000	'000	'000	%	%	%
MALES											
New South Wales	1 547.5	262.4	1 809.9	86.9	106.8	1 916.7	787.8	2 704.5	5.3	5.6	70.9
Victoria	1 159.1	215.0	1 374.1	57.4	69.5	1 443.6	567.9	2 011.5	4.7	4.8	71.8
Queensland	949.1	155.6	1 104.7	40.3	49.3	1 154.0	434.3	1 588.3	4.1	4.3	72.7
South Australia	341.1	64.9	406.0	17.6	23.6	429.6	192.9	622.6	4.9	5.5	69.0
Western Australia	516.9	82.3	599.2	13.4	17.7	616.9	198.6	815.4	2.5	2.9	75.6
Tasmania	101.9	20.1	122.0	7.0	8.5	130.5	61.1	191.6	6.4	6.5	68.1
Northern Territory	46.7	7.7	54.4	*2.3	*3.1	57.6	20.3	77.9	*4.7	*5.5	73.9
Australian Capital Territory	79.9	15.9	95.8	2.6	4.4	100.2	26.9	127.0	3.2	4.4	78.9
<b>Australia</b>	<b>4 742.2</b>	<b>823.9</b>	<b>5 566.2</b>	<b>227.5</b>	<b>282.9</b>	<b>5 849.1</b>	<b>2 289.8</b>	<b>8 138.8</b>	<b>4.6</b>	<b>4.8</b>	<b>71.9</b>
FEMALES											
New South Wales	815.2	664.3	1 479.4	41.7	74.3	1 553.7	1 235.5	2 789.2	4.9	4.8	55.7
Victoria	595.4	534.9	1 130.3	36.9	63.2	1 193.4	911.0	2 104.4	5.8	5.3	56.7
Queensland	503.5	415.1	918.5	37.0	54.4	973.0	646.1	1 619.1	6.9	5.6	60.1
South Australia	170.2	169.0	339.1	10.2	17.1	356.2	288.1	644.3	5.7	4.8	55.3
Western Australia	238.7	230.8	469.5	10.8	19.5	489.1	332.9	822.0	4.3	4.0	59.5
Tasmania	50.5	52.4	102.9	4.0	6.2	109.1	91.5	200.6	7.3	5.7	54.4
Northern Territory	32.6	13.2	45.8	*1.3	*3.2	49.0	23.4	72.4	*4.0	*6.4	67.6
Australian Capital Territory	58.7	31.8	90.5	1.8	3.1	93.5	40.5	134.0	3.0	3.3	69.8
<b>Australia</b>	<b>2 464.7</b>	<b>2 111.4</b>	<b>4 576.1</b>	<b>143.8</b>	<b>240.9</b>	<b>4 817.0</b>	<b>3 569.0</b>	<b>8 386.0</b>	<b>5.5</b>	<b>5.0</b>	<b>57.4</b>
PERSONS											
New South Wales	2 362.6	926.7	3 289.3	128.6	181.1	3 470.4	2 023.3	5 493.7	5.2	5.2	63.2
Victoria	1 754.5	749.9	2 504.4	94.3	132.7	2 637.0	1 478.9	4 115.9	5.1	5.0	64.1
Queensland	1 452.6	570.7	2 023.3	77.3	103.7	2 127.0	1 080.5	3 207.4	5.1	4.9	66.3
South Australia	511.3	233.9	745.1	27.9	40.7	785.8	481.0	1 266.8	5.2	5.2	62.0
Western Australia	755.6	313.1	1 068.7	24.1	37.2	1 105.9	531.5	1 637.4	3.1	3.4	67.5
Tasmania	152.4	72.5	224.9	11.0	14.7	239.6	152.6	392.2	6.7	6.1	61.1
Northern Territory	79.3	20.9	100.3	3.6	6.3	106.6	43.7	150.3	4.4	5.9	70.9
Australian Capital Territory	138.6	47.6	186.2	4.4	7.5	193.7	67.3	261.1	3.1	3.9	74.2
<b>Australia</b>	<b>7 206.9</b>	<b>2 935.3</b>	<b>10 142.2</b>	<b>371.3</b>	<b>523.8</b>	<b>10 666.1</b>	<b>5 858.8</b>	<b>16 524.9</b>	<b>4.9</b>	<b>4.9</b>	<b>64.5</b>

\* estimate is subject to sampling variability too high for most practical purposes

	EMPLOYED		UNEMPLOYED		UNEMPLOYMENT RATE		Participation rate	Employment to population ratio	Unemployment to population ratio – looking for full-time work
	Full time	Total	Looking for f/t work	Total	Looking for f/t work	Total			
'000	'000	'000	'000	%	%	%	%	%	
MALES									
May 2003	141.6	329.9	37.0	71.8	20.7	17.9	57.4	47.1	5.3
May 2004	149.1	354.6	36.7	68.5	19.7	16.2	59.6	50.0	5.2
2005									
May	164.0	365.2	34.8	65.4	17.5	15.2	60.3	51.1	4.9
June	162.9	362.1	35.7	66.0	18.0	15.4	59.9	50.7	5.0
July	161.6	358.0	36.6	66.8	18.4	15.7	59.5	50.1	5.1
August	160.1	353.6	37.2	67.8	18.9	16.1	59.0	49.5	5.2
September	158.1	349.6	37.5	68.8	19.2	16.5	58.5	48.9	5.2
October	156.1	346.9	37.5	69.7	19.4	16.7	58.2	48.5	5.2
November	154.5	345.8	37.3	70.4	19.4	16.9	58.2	48.3	5.2
December	153.8	346.4	36.9	70.6	19.4	16.9	58.3	48.4	5.2
2006									
January	153.8	348.3	36.5	70.4	19.2	16.8	58.4	48.6	5.1
February	154.5	350.7	36.4	70.0	19.0	16.7	58.7	48.9	5.1
March	155.5	353.1	36.3	69.8	18.9	16.5	59.0	49.2	5.1
April	156.6	355.3	36.4	69.5	18.9	16.4	59.2	49.5	5.1
May	157.3	356.5	36.6	69.6	18.9	16.3	59.3	49.6	5.1
FEMALES									
May 2003	83.2	346.8	26.4	59.5	24.1	14.7	60.5	51.6	3.9
May 2004	84.8	358.9	29.6	65.9	25.9	15.5	62.4	52.7	4.3
2005									
May	85.6	366.1	26.9	61.6	23.9	14.4	62.5	53.5	3.9
June	85.2	367.3	27.0	63.0	24.0	14.6	62.9	53.7	3.9
July	84.4	367.0	27.1	64.3	24.3	14.9	63.1	53.6	4.0
August	83.3	365.0	27.1	65.0	24.5	15.1	62.9	53.4	4.0
September	82.5	362.1	27.1	65.3	24.7	15.3	62.5	52.9	4.0
October	82.0	358.9	26.9	64.5	24.7	15.2	61.9	52.5	3.9
November	81.8	356.3	26.6	63.0	24.6	15.0	61.3	52.1	3.9
December	81.7	354.6	26.3	61.6	24.3	14.8	60.8	51.8	3.8
2006									
January	81.4	353.5	26.0	60.9	24.2	14.7	60.5	51.6	3.8
February	80.9	352.5	25.9	60.8	24.3	14.7	60.3	51.5	3.8
March	80.2	351.5	26.0	61.1	24.5	14.8	60.2	51.3	3.8
April	79.5	350.6	26.1	61.7	24.7	15.0	60.1	51.1	3.8
May	78.7	349.3	26.3	62.6	25.1	15.2	60.1	50.9	3.8
PERSONS									
May 2003	224.8	676.8	63.4	131.3	22.0	16.3	58.9	49.3	4.6
May 2004	233.9	713.5	66.3	134.3	22.1	15.9	61.0	51.3	4.8
2005									
May	249.6	731.3	61.8	127.0	19.8	14.8	61.4	52.3	4.4
June	248.1	729.4	62.7	129.0	20.2	15.0	61.4	52.2	4.5
July	246.1	725.0	63.7	131.1	20.6	15.3	61.2	51.8	4.6
August	243.5	718.7	64.3	132.8	20.9	15.6	60.9	51.4	4.6
September	240.7	711.8	64.6	134.1	21.2	15.9	60.5	50.9	4.6
October	238.2	705.8	64.4	134.2	21.3	16.0	60.0	50.4	4.6
November	236.4	702.1	63.9	133.4	21.3	16.0	59.7	50.2	4.6
December	235.5	701.0	63.2	132.2	21.2	15.9	59.5	50.1	4.5
2006									
January	235.3	701.8	62.6	131.3	21.0	15.8	59.5	50.1	4.5
February	235.5	703.2	62.3	130.8	20.9	15.7	59.5	50.2	4.4
March	235.7	704.6	62.3	130.9	20.9	15.7	59.6	50.3	4.4
April	236.1	705.9	62.5	131.2	20.9	15.7	59.7	50.3	4.5
May	235.9	705.9	62.9	132.2	21.0	15.8	59.7	50.3	4.5

PERSONS AGED 15–19 YEARS, Labour Force Status: **Seasonally Adjusted**

	EMPLOYED		UNEMPLOYED		UNEMPLOYMENT RATE		Participation rate	Employment to population ratio	Unemployment to population ratio – looking for full-time work
	Full time	Total	Looking for f/t work	Total	Looking for f/t work	Total			
'000	'000	'000	'000	%	%	%	%	%	
MALES									
May 2003	144.2	339.1	36.7	72.4	20.3	17.6	58.8	48.5	5.2
May 2004	145.0	353.7	36.8	67.3	20.2	16.0	59.4	49.9	5.2
2005									
May	163.5	365.9	36.3	69.4	18.1	15.9	61.0	51.2	5.1
June	163.7	364.4	35.8	64.9	18.0	15.1	60.1	51.0	5.0
July	161.8	353.5	34.9	66.0	17.8	15.7	58.7	49.5	4.9
August	161.2	355.7	38.0	65.4	19.1	15.5	58.9	49.8	5.3
September	159.4	352.5	38.0	68.1	19.2	16.2	58.9	49.3	5.3
October	149.4	338.2	38.2	75.6	20.4	18.3	57.9	47.3	5.3
November	162.0	351.7	37.4	67.8	18.7	16.2	58.6	49.2	5.2
December	151.5	345.4	35.6	69.2	19.0	16.7	57.9	48.3	5.0
2006									
January	150.4	341.7	37.4	72.5	19.9	17.5	57.8	47.7	5.2
February	154.3	354.8	35.7	68.2	18.8	16.1	59.0	49.5	5.0
March	157.6	355.9	36.3	71.0	18.7	16.6	59.5	49.6	5.1
April	155.9	353.6	36.2	69.8	18.9	16.5	59.0	49.3	5.0
May	159.5	357.6	37.3	68.4	18.9	16.1	59.3	49.8	5.2
FEMALES									
May 2003	84.4	345.3	26.0	58.9	23.5	14.6	60.1	51.4	3.9
May 2004	90.2	358.1	30.4	66.6	25.2	15.7	62.4	52.6	4.5
2005									
May	85.1	364.3	26.5	58.9	23.8	13.9	61.9	53.3	3.9
June	86.5	373.8	26.7	59.6	23.5	13.7	63.4	54.6	3.9
July	84.0	366.0	27.4	71.0	24.6	16.2	63.9	53.5	4.0
August	82.8	366.6	25.4	61.8	23.5	14.4	62.6	53.6	3.7
September	84.2	363.7	28.2	65.6	25.1	15.3	62.8	53.2	4.1
October	80.8	352.2	29.0	67.0	26.4	16.0	61.3	51.5	4.2
November	80.2	359.5	25.0	62.5	23.8	14.8	61.7	52.5	3.7
December	80.5	351.1	25.5	61.4	24.0	14.9	60.3	51.3	3.7
2006									
January	85.2	356.8	26.6	59.7	23.8	14.3	60.8	52.1	3.9
February	83.1	351.9	26.1	59.9	23.9	14.5	60.1	51.4	3.8
March	75.6	351.7	24.7	56.3	24.6	13.8	59.5	51.3	3.6
April	81.3	350.1	27.4	70.0	25.2	16.7	61.3	51.1	4.0
May	77.5	348.8	26.0	60.7	25.1	14.8	59.7	50.8	3.8
PERSONS									
May 2003	228.6	684.4	62.6	131.3	21.5	16.1	59.5	49.9	4.6
May 2004	235.2	711.8	67.2	133.9	22.2	15.8	60.8	51.2	4.8
2005									
May	248.6	730.2	62.8	128.3	20.2	14.9	61.4	52.2	4.5
June	250.2	738.2	62.5	124.5	20.0	14.4	61.7	52.8	4.5
July	245.8	719.5	62.3	137.0	20.2	16.0	61.2	51.4	4.5
August	244.0	722.3	63.4	127.2	20.6	15.0	60.7	51.6	4.5
September	243.6	716.3	66.2	133.8	21.4	15.7	60.8	51.2	4.7
October	230.1	690.4	67.2	142.6	22.6	17.1	59.5	49.3	4.8
November	242.2	711.2	62.4	130.3	20.5	15.5	60.1	50.8	4.5
December	232.0	696.5	61.1	130.6	20.9	15.8	59.1	49.7	4.4
2006									
January	235.6	698.5	64.0	132.2	21.4	15.9	59.3	49.9	4.6
February	237.4	706.8	61.8	128.1	20.7	15.3	59.6	50.4	4.4
March	233.2	707.6	61.0	127.3	20.7	15.2	59.5	50.5	4.4
April	237.1	703.7	63.7	139.8	21.2	16.6	60.1	50.1	4.5
May	236.9	706.4	63.2	129.1	21.1	15.5	59.5	50.3	4.5

	EMPLOYED			UNEMPLOYED			Civilian population aged 15–19 years	UNEMPLOYMENT			Participation rate	Unemployment to population ratio – looking for full-time work
	Full time	Part time	Total	Looking for f/t work	Total	Labour force		Not in labour force	RATE			
									Looking for f/t work	Total		
	'000	'000	'000	'000	'000	'000	'000	'000	%	%	%	%
NOT ATTENDING FULL-TIME EDUCATION												
Males												
May 2003	136.2	41.2	177.4	29.6	33.6	210.9	21.8	232.7	17.9	15.9	90.6	12.7
May 2004	137.8	39.9	177.7	31.6	32.5	210.2	28.9	239.1	18.7	15.5	87.9	13.2
May 2005	154.0	38.5	192.4	28.7	30.0	222.5	20.7	243.1	15.7	13.5	91.5	11.8
May 2006	148.7	35.6	184.3	30.4	33.5	217.7	25.3	243.0	17.0	15.4	89.6	12.5
Females												
May 2003	78.9	52.7	131.7	23.5	25.2	156.9	28.9	185.9	22.9	16.1	84.4	12.6
May 2004	80.5	59.4	139.9	26.6	28.5	168.5	25.6	194.1	24.8	16.9	86.8	13.7
May 2005	75.9	61.9	137.8	20.7	23.7	161.5	33.6	195.1	21.4	14.7	82.8	10.6
May 2006	69.1	55.5	124.6	19.5	23.3	147.9	29.0	177.0	22.0	15.8	83.6	11.0
Persons												
May 2003	215.1	93.9	309.1	53.1	58.8	367.9	50.7	418.6	19.8	16.0	87.9	12.7
May 2004	218.3	99.4	317.6	58.2	61.0	378.7	54.5	433.1	21.1	16.1	87.4	13.4
May 2005	229.9	100.4	330.2	49.5	53.7	384.0	54.3	438.3	17.7	14.0	87.6	11.3
May 2006	217.8	91.0	308.9	49.9	56.8	365.6	54.3	420.0	18.6	15.5	87.1	11.9
ATTENDING FULL-TIME EDUCATION												
Males												
May 2003	*3.5	149.0	152.5	5.4	37.0	189.5	277.6	467.1	60.5	19.5	40.6	1.2
May 2004	*3.1	163.2	166.3	*3.9	32.9	199.2	270.5	469.7	*55.9	16.5	42.4	*0.8
May 2005	5.0	158.5	163.5	6.6	37.1	200.6	270.5	471.1	57.0	18.5	42.6	1.4
May 2006	6.1	157.5	163.6	6.2	32.5	196.1	279.2	475.3	50.1	16.6	41.3	1.3
Females												
May 2003	*0.6	211.1	211.7	*2.5	32.2	243.8	242.4	486.2	*81.0	13.2	50.2	*0.5
May 2004	*4.0	212.6	216.6	*3.4	35.9	252.5	234.5	487.0	*45.7	14.2	51.8	*0.7
May 2005	*3.4	221.8	225.2	5.4	33.0	258.2	230.6	488.8	61.7	12.8	52.8	1.1
May 2006	*2.7	220.6	223.3	6.0	35.0	258.3	251.0	509.3	68.6	13.5	50.7	1.2
Persons												
May 2003	*4.1	360.1	364.2	7.9	69.2	433.4	519.9	953.3	65.7	16.0	45.5	0.8
May 2004	7.1	375.8	383.0	7.3	68.7	451.7	505.0	956.7	50.7	15.2	47.2	0.8
May 2005	8.4	380.3	388.7	12.0	70.1	458.8	501.1	959.9	59.0	15.3	47.8	1.3
May 2006	8.9	378.1	386.9	12.1	67.5	454.4	530.2	984.6	57.8	14.9	46.2	1.2
TOTAL												
Males												
May 2003	139.7	190.2	329.9	35.0	70.6	400.5	299.4	699.8	20.0	17.6	57.2	5.0
May 2004	140.9	203.1	344.0	35.5	65.4	409.4	299.3	708.7	20.1	16.0	57.8	5.0
May 2005	159.0	196.9	355.9	35.4	67.1	423.0	291.2	714.2	18.2	15.9	59.2	5.0
May 2006	154.8	193.0	347.9	36.5	66.0	413.9	304.5	718.3	19.1	15.9	57.6	5.1
Females												
May 2003	79.5	263.8	343.4	26.0	57.4	400.8	271.3	672.1	24.6	14.3	59.6	3.9
May 2004	84.5	272.1	356.6	30.0	64.4	421.0	260.1	681.1	26.2	15.3	61.8	4.4
May 2005	79.3	283.8	363.0	26.1	56.7	419.7	264.2	684.0	24.8	13.5	61.4	3.8
May 2006	71.8	276.1	347.9	25.5	58.3	406.2	280.0	686.2	26.2	14.4	59.2	3.7
Persons												
May 2003	219.2	454.0	673.2	60.9	128.0	801.2	570.7	1 371.9	21.8	16.0	58.4	4.4
May 2004	225.4	475.2	700.6	65.5	129.8	830.4	559.5	1 389.8	22.5	15.6	59.7	4.7
May 2005	238.2	480.7	718.9	61.5	123.9	842.8	555.4	1 398.2	20.5	14.7	60.3	4.4
May 2006	226.7	469.1	695.8	62.0	124.3	820.1	584.5	1 404.6	21.5	15.2	58.4	4.4

\* estimate is subject to sampling variability too high for most practical purposes

	EMPLOYED			UNEMPLOYED			Civilian population aged 15–19 years	UNEMPLOYMENT RATE		Participation rate	Unemployment to population ratio – looking for full-time work	
	Full time	Part time	Total	Looking for f/t work	Total	Labour force		Not in labour force	Looking for f/t work			Total
	'000	'000	'000	'000	'000	'000		'000	%			%
NOT ATTENDING FULL-TIME EDUCATION												
New South Wales	61.0	27.1	88.1	15.3	19.0	107.0	17.1	124.1	20.1	17.7	86.2	12.4
Victoria	39.8	16.8	56.6	10.5	11.2	67.8	10.2	78.0	20.9	16.5	86.9	13.5
Queensland	53.6	23.0	76.7	14.3	15.0	91.7	11.3	103.0	21.0	16.4	89.0	13.9
South Australia	15.1	9.1	24.2	4.5	5.4	29.6	3.8	33.4	22.9	18.4	88.5	13.4
Western Australia	35.1	10.1	45.2	4.0	4.5	49.7	7.6	57.3	10.3	9.1	86.8	7.0
Tasmania	6.6	2.4	9.0	*0.6	*0.6	9.6	1.6	11.2	*8.4	*6.3	85.8	*5.4
Northern Territory	2.9	*1.0	3.9	*0.2	*0.5	4.4	2.3	6.7	*6.3	*11.7	65.7	*2.9
Australian Capital Territory	3.6	1.5	5.2	*0.4	*0.5	5.7	*0.4	6.1	*10.5	*9.2	93.6	*7.0
Australia	217.8	91.0	308.9	49.9	56.8	365.6	54.3	420.0	18.6	15.5	87.1	11.9
ATTENDING FULL-TIME EDUCATION												
New South Wales	*2.7	106.1	108.8	*4.8	25.0	133.8	200.3	334.1	*64.2	18.7	40.0	*1.4
Victoria	*1.9	101.7	103.6	*2.8	15.1	118.6	144.2	262.8	*59.2	12.7	45.1	*1.1
Queensland	*2.7	84.0	86.7	*2.1	11.6	98.3	81.6	179.9	*43.8	11.8	54.7	*1.2
South Australia	*0.2	28.5	28.7	*1.0	6.4	35.1	34.8	69.9	*85.2	18.1	50.2	*1.5
Western Australia	*0.7	40.5	41.2	*0.6	4.4	45.7	43.9	89.5	*45.0	9.7	51.0	*0.7
Tasmania	*0.1	7.7	7.8	*0.5	2.4	10.2	12.8	23.0	*84.5	23.3	44.3	*2.0
Northern Territory	*0.2	2.5	2.8	*—	*0.6	3.3	4.9	8.2	*—	*17.0	40.6	*—
Australian Capital Territory	*0.3	7.1	7.3	*0.3	2.1	9.4	7.7	17.1	*52.4	22.1	55.2	*1.9
Australia	8.9	378.1	386.9	12.1	67.5	454.4	530.2	984.6	57.8	14.9	46.2	1.2
TOTAL												
New South Wales	63.7	133.1	196.8	20.2	44.0	240.8	217.5	458.3	24.1	18.3	52.5	4.4
Victoria	41.7	118.5	160.2	13.3	26.3	186.5	154.4	340.8	24.2	14.1	54.7	3.9
Queensland	56.4	107.1	163.4	16.4	26.6	190.1	92.9	282.9	22.5	14.0	67.2	5.8
South Australia	15.3	37.6	52.9	5.5	11.8	64.7	38.7	103.3	26.5	18.2	62.6	5.3
Western Australia	35.9	50.6	86.4	4.6	8.9	95.4	51.5	146.9	11.4	9.4	65.0	3.2
Tasmania	6.7	10.1	16.8	*1.1	3.0	19.8	14.4	34.2	*13.7	15.0	57.9	*3.1
Northern Territory	3.2	3.5	6.7	*0.2	*1.1	7.8	7.2	15.0	*5.8	*14.0	51.9	*1.3
Australian Capital Territory	3.9	8.6	12.5	*0.7	2.6	15.1	8.1	23.2	*16.0	17.2	65.2	*3.2
Australia	226.7	469.1	695.8	62.0	124.3	820.1	584.5	1 404.6	21.5	15.2	58.4	4.4

\* estimate is subject to sampling variability too high for most practical purposes

— nil or rounded to zero (including null cells)

## WHAT IF...? REVISIONS TO TREND ESTIMATES

### EFFECT OF NEW SEASONALLY ADJUSTED ESTIMATES ON TREND ESTIMATES

#### TREND REVISIONS

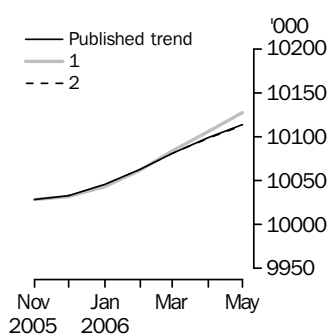
Each time new seasonally adjusted estimates become available, trend estimates are revised. This revision is a combined result of the concurrent seasonal adjustment process and the application of surrogates of the Henderson average to the seasonally adjusted series (see paragraphs 21 to 29 of the Explanatory Notes).

The examples in the tables below show two illustrative scenarios and the consequent revisions to previous trend estimates of employment and the unemployment rate. The revisions in the scenarios below are only due to the use of surrogates of the Henderson average, as the impact of revision of the seasonally adjusted estimates can not be estimated in advance.

- (1) The June seasonally adjusted estimate is *higher* than the May estimate by:  
0.26% for employment  
1.80% for the unemployment rate
- (2) The June seasonally adjusted estimate is *lower* than the May estimate by:  
0.26% for employment  
1.80% for the unemployment rate

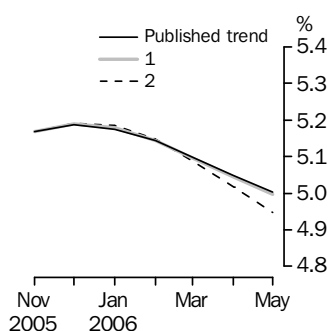
The percentage changes of 0.26% and 1.80% were chosen because they represent the average absolute monthly percentage changes in employment and the unemployment rate respectively.

#### EMPLOYMENT



		WHAT IF NEXT MONTH'S SEASONALLY ADJUSTED ESTIMATE IS:	
		(1) 10 168.6 i.e. rises by 0.26%	(2) 10 115.8 i.e. falls by 0.26%
Trend as published			
<b>2006</b>			
February	10 063.1	10 062.0	10 062.9
March	10 081.3	10 083.6	10 081.2
April	10 099.1	10 106.0	10 098.2
May	10 114.1	10 127.8	10 113.1

#### UNEMPLOYMENT RATE



		WHAT IF NEXT MONTH'S SEASONALLY ADJUSTED ESTIMATE IS:	
		(1) 5.0 i.e. rises by 1.80%	(2) 4.8 i.e. falls by 1.80%
Trend as published			
<b>2006</b>			
February	5.1	5.1	5.1
March	5.1	5.1	5.1
April	5.0	5.0	5.0
May	5.0	5.0	4.9

## EXPLANATORY NOTES

### INTRODUCTION

**1** This publication contains estimates of the civilian labour force derived from the Labour Force Survey component of the Monthly Population Survey. The full time series for estimates from this publication are also available electronically – see *Labour Force, Australia, Spreadsheets* (cat. no. 6202.0.55.001). More detailed estimates are released one week after this publication in various electronic formats – see *Labour Force, Australia, Detailed – Electronic Delivery* (cat. no. 6291.0.55.001) and *Labour Force, Australia, Detailed, Quarterly* (cat. no. 6291.0.55.003).

### CONCEPTS, SOURCES AND METHODS

**2** The conceptual framework used in Australia's Labour Force Survey aligns closely with the standards and guidelines set out in Resolutions of International Conferences of Labour Statisticians. Descriptions of the underlying concepts and structure of Australia's labour force statistics, and the sources and methods used in compiling the estimates, are presented in *Labour Statistics: Concepts, Sources and Methods* (cat. no. 6102.0.55.001) which is available on the ABS web site <<http://www.abs.gov.au>> (Methods, Classifications, Concepts & Standards).

### LABOUR FORCE SURVEY

**3** The Labour Force Survey is based on a multi-stage area sample of private dwellings (currently about 30,000 houses, flats, etc.) and a list sample of non-private dwellings (hotels, motels, etc.), and covers about 0.45% of the population of Australia. Information is obtained from the occupants of selected dwellings by specially trained interviewers.

**4** The information is collected using computer-assisted interviewing (CAI), whereby responses are recorded directly onto an electronic questionnaire on a notebook computer. The CAI method was progressively implemented from October 2003 to August 2004, replacing the 'pen and paper' method previously used.

**5** Households selected for the Labour Force Survey are interviewed each month for eight months, with one-eighth of the sample being replaced each month. The first interview is conducted face-to-face. Subsequent interviews are conducted by telephone (if acceptable to the respondent).

**6** The interviews are generally conducted during the two weeks beginning on the Monday between the 6th and 12th of each month. The information obtained relates to the week before the interview (i.e. the reference week). Each year, to deal with operational difficulties involved with collecting and processing the Labour Force Survey around the Christmas and New Year holiday period, interviews for December start four weeks after November interviews start, and January interviews start five weeks after December interviews start. As a result, January interviewing may commence as early as the 8th or as late as the 14th, depending on the year. Occasionally, circumstances that present significant operational difficulties for survey collection can result in a change to the normal pattern for the start of interviewing.

**7** Estimates from the Labour Force Survey are published first in this publication 31 days after the commencement of interviews for that month, with the exception of estimates for each December which are published 38 days after the commencement of interviews.

### SCOPE OF SURVEY

**8** The Labour Force Survey includes all persons aged 15 years and over except members of the permanent defence forces, certain diplomatic personnel of overseas governments customarily excluded from census and estimated population counts, overseas residents in Australia, and members of non-Australian defence forces (and their dependants) stationed in Australia.

### COVERAGE

**9** In the Labour Force Survey, coverage rules are applied which aim to ensure that each person is associated with only one dwelling, and hence has only one chance of selection. The coverage rules are necessarily a balance between theoretical and operational considerations. Nevertheless, the chance of a person being enumerated at two separate dwellings in the survey is considered to be negligible.

## EXPLANATORY NOTES *continued*

### POPULATION BENCHMARKS

**10** Labour Force Survey estimates are calculated in such a way as to add up to independent estimates of the civilian population aged 15 years and over (population benchmarks). From February 2004, labour force estimates have been compiled using benchmarks based on the results of the 2001 Census of Population and Housing. Revisions were made to historical estimates from January 1999 to January 2004.

### COMPARABILITY OF SERIES

**11** From April 1986, the definition of employed persons was changed to include persons who worked without pay between 1 and 14 hours per week in a family business or on a farm (i.e. contributing family workers). For further information, see paragraphs 36 and 37 of the Explanatory Notes to the February 1987 issue of *Labour Force, Australia* (cat. no. 6203.0).

**12** The ABS introduced telephone interviewing into the Labour Force Survey in August 1996. Implementation was phased in for each new sample group from August 1996 to February 1997. During the period of implementation, the new method produced different estimates than would have been obtained under the old methodology. The effect dissipated over the final months of implementation and was no longer discernible from February 1997. The estimates for February 1997 and onwards are directly comparable to estimates for periods prior to August 1996. For further details, see the feature article in the June 1997 issue of *Labour Force, Australia* (cat. no. 6203.0).

**13** From April 2001 the Labour Force Survey has been conducted using a redesigned questionnaire containing additional data items and some minor definitional changes. The definition of unemployed persons was changed to include all persons who were waiting to start work and were available to start in the reference week. This change was introduced in February 2004, when historical unit record data were revised from April 2001 to January 2004. This revision created a small trend break at April 2001 in unemployed persons and unemployment rate series. For further details, see *Information Paper: Forthcoming Changes to Labour Force Statistics* (cat. no. 6292.0).

**14** Core labour force series were revised in April 2001 for the period April 1986 to March 2001 for the remaining definitional changes introduced with the redesigned questionnaire, to reduce the impact of the changes on labour force series. For further details, see *Information Paper: Implementing the Redesigned Labour Force Survey Questionnaire* (cat. no. 6295.0) and *Information Paper: Questionnaires Used in the Labour Force Survey* (cat. no. 6232.0).

### SURVEY SAMPLE REDESIGN

**15** The Labour Force Survey sample was last reselected using information collected in the 2001 Census of Population and Housing.

**16** The bulk of the new sample was phased in over the period November 2002 to June 2003, with one-eighth of this portion of the sample being introduced every month. The remainder of the sample (about 18% of the total), which covers less settled areas of Australia and non-private dwellings was rotated in full for New South Wales, Victoria, Tasmania, Northern Territory and Australian Capital Territory in November 2002, and for Queensland, South Australia and Western Australia in December 2002. Such a pattern of implementation means that any changes to labour force estimates due to differences between the two samples, or any other influences, were spread over the eight months.

**17** For further details, see *Information Paper: Labour Force Survey Sample Design* (cat. no. 6269.0) and *Technical Report: New Labour Force Survey sample selections: analysis of the effect on estimates* in the October 2003 issue of *Australian Labour Market Statistics* (cat. no. 6105.0).



## EXPLANATORY NOTES *continued*

### RELIABILITY OF ESTIMATES

**18** Two types of error are possible in an estimate based on a sample survey: sampling error and non-sampling error.

**19** Sampling error occurs because a sample, rather than the entire population, is surveyed. One measure of the likely difference resulting from not including all dwellings in the survey is given by the standard error. There are about two chances in three that a sample estimate will differ by less than one standard error from the figure that would have been obtained if all dwellings had been included in the survey, and about nineteen chances in twenty that the difference will be less than two standard errors. Standard errors of estimates for the latest month and of estimates of movements since the previous month are shown on pages 27 and 28. Standard errors of other estimates and other movements may be determined by using information in the paper *Labour Force Survey Standard Errors* (cat. no. 6298.0) which is available free of charge on the ABS web site <<http://www.abs.gov.au>> (Statistics).

**20** Non-sampling error arises from inaccuracies in collecting, recording and processing the data. Every effort is made to minimise reporting error by the careful design of questionnaires, intensive training and supervision of interviewers, and efficient data processing procedures. Non-sampling error also arises because information cannot be obtained from all persons selected in the survey. The Labour Force Survey receives a high level of co-operation from individuals in selected dwellings, with the average response rate over the last year being 95%. See Glossary for definition of response rate.

### SEASONAL ADJUSTMENT AND TREND ESTIMATION

**21** Seasonal adjustment is a means of removing the estimated effects of normal seasonal variation from the series so that the effects of other influences on the series can be more clearly recognised. Seasonal adjustment does not aim to remove the irregular or non-seasonal influences which may be present in any particular month. This means that month-to-month movements of the seasonally adjusted estimates may not be reliable indicators of trend behaviour.

**22** The Labour Force Survey uses the concurrent seasonal adjustment method to derive seasonal factors. Concurrent seasonal adjustment uses data up to the current month to estimate seasonal factors for the current and all previous months. This process can result in revisions each month to estimates for earlier periods. However, in most instances, the only noticeable revisions will be to the seasonally adjusted estimates for the previous month and one year prior to the current month.

**23** Seasonal adjustment is able to remove the effect of events which occur at the same time in the survey every year. However, there are some events, like holidays, which are not always at the same time in the survey cycle or which are not at the same time across Australia. The effects of these types of events on LFS estimates cannot in all cases be removed, because the pattern of their effects cannot be determined. However, two events which are adjusted for in the seasonally adjusted series are the January interview start date and the timing of Easter.

**24** For more information on concurrent seasonal adjustment and survey proximity to holiday periods, see *Information Paper: Forthcoming Changes to Labour Force Statistics* (cat. no. 6292.0) released in December 2003.

**25** While seasonal factors for the complete time series are estimated each month, they will continue to be reviewed annually at a more detailed level to take into account each additional year's original data. This annual review will not normally result in significant changes to published estimates. The review will be conducted in February each year with the results released in the February issue of this publication.

## EXPLANATORY NOTES *continued*

### SEASONAL ADJUSTMENT AND TREND ESTIMATION *continued*

**26** The smoothing of seasonally adjusted series to produce 'trend' series reduces the impact of the irregular component of the seasonally adjusted series. These trend estimates are derived by applying a 13-term Henderson-weighted moving average to all months except the last six. The last six monthly trend estimates are obtained by applying surrogates of the Henderson average to the seasonally adjusted series. Trend estimates are used to analyse the underlying behaviour of a series over time.

**27** While this smoothing technique enables estimates to be produced for the latest month, it does result in revisions in addition to those caused by the revision of seasonally adjusted estimates. Generally, revisions due to the use of surrogates of the Henderson average become smaller, and after three months have a negligible impact on the series.

**28** Trend estimates are published for the Northern Territory in table 10 and for the Australian Capital Territory in table 11. Unadjusted series for the two territories have shown, historically, a high degree of variability, which can lead to considerable revisions to the seasonally adjusted estimates each month when seasonal factors are estimated. For this reason, seasonally adjusted estimates are not currently published for the two Territories. In addition, caution should be exercised in the interpretation of trend estimates for the two territories, particularly for the three most recent months, where revisions may be relatively large.

**29** For further information, see *A Guide to Interpreting Time Series – Monitoring Trends* (cat. no. 1349.0) or contact the Assistant Director, Time Series Analysis on (02) 6252 6345.

### RELATED PUBLICATIONS

**30** Users may also wish to refer to *Australian Labour Market Statistics* (cat. no. 6105.0). This publication contains additional tables and a detailed list of related publications. For further information about this publication, please contact the Assistant Director, Labour Market Statistics on (02) 6252 7636.

**31** ABS Information about the labour market can be found on the Labour theme page on the ABS web site <<http://www.abs.gov.au>> (Themes), or from ABS Bookshops.

**32** Current publications and other products released by the ABS are listed in the *Catalogue of Publications and Products* (cat. no. 1101.0). The Catalogue is available from any ABS office or the ABS web site <<http://www.abs.gov.au>> (Statistics). The ABS also issues a daily Release Advice on the web site (Future Releases) which details products to be released in the week ahead.

### DATA AVAILABLE ON REQUEST

**33** As well as the statistics included in this and related publications, the ABS may have other relevant data available. Inquiries should be made to the Labour Force contact officer on (02) 6252 6525 or to any ABS office.

### EFFECTS OF ROUNDING

**34** Estimates have been rounded and discrepancies may occur between sums of the component items and totals.

**35** Estimates of movement shown in this publication are obtained by taking the difference of unrounded estimates. The movement estimate is then rounded to one decimal place. Therefore where a discrepancy occurs between the reported movement and the difference of the rounded estimates, the reported movement will be more accurate.

### SYMBOLS AND OTHER USAGES

**36** SYMBOLS AND OTHER USAGES  
pts percentage points

## STANDARD ERRORS

### STANDARD ERRORS

The estimates in this publication are based on information gained from the occupants of a sample survey of dwellings. Because the entire population is not surveyed, the published estimates are subject to sampling error. The most common way of quantifying such sampling error is to calculate the standard error for the published estimate or statistic. For more information, see paragraph 19 of the Explanatory Notes.

### LEVEL ESTIMATES

To illustrate, let us say the published level estimate for employed persons aged 15–19 years is 700,000 and the associated standard error is 9,800. The standard error is then used to interpret the level estimate of 700,000. For instance, the standard error of 9,800 indicates that:

- There are approximately two chances in three that the real value falls within the range 690,200 to 709,800 ( $700,000 \pm 9,800$ )
- There are approximately nineteen chances in twenty that the real value falls within the range 680,400 to 719,600 ( $700,000 \pm 19,600$ ).

The real value in this case is the result we would obtain if we could enumerate the total population.

The following table shows the standard errors for this month's level estimates.

										AUSTRALIA		
										NSW	Vic.	Qld
										SA	WA	Tas.
										NT	ACT	
										Males	Females	Persons
<b>Aged 15 years and over</b>												
Employed												
Full time	'000	21.6	17.0	14.3	6.5	8.6	3.0	4.1	2.1	26.6	18.2	32.4
Part time	'000	13.4	11.0	9.7	4.5	6.0	2.0	1.4	1.4	9.8	16.6	20.2
Total	'000	24.9	20.1	15.5	7.6	9.6	3.6	5.0	2.3	28.9	26.1	36.8
Unemployed												
Looking for f/t work	'000	7.6	5.9	4.8	2.2	2.2	1.2	0.9	0.7	8.4	6.6	11.0
Looking for p/t work	'000	4.7	3.6	2.8	1.5	1.6	0.6	0.7	0.6	4.0	5.4	6.8
Total	'000	9.2	7.1	5.6	2.6	2.7	1.4	1.3	0.9	9.5	8.7	13.2
Labour force	'000	25.5	20.5	15.6	7.7	9.6	3.7	5.2	2.3	29.5	26.9	37.5
Not in labour force	'000	23.0	17.8	13.3	6.6	8.9	3.3	4.4	2.0	24.2	29.2	34.7
Unemployment rate												
Looking for f/t work	pts	0.3	0.3	0.3	0.4	0.3	0.7	1.0	0.5	0.2	0.3	0.1
Looking for p/t work	pts	0.5	0.4	0.5	0.6	0.5	0.8	3.0	1.1	0.5	0.2	0.2
Total	pts	0.3	0.3	0.3	0.3	0.2	0.6	1.1	0.4	0.2	0.2	0.1
Participation rate	pts	0.5	0.5	0.5	0.6	0.6	0.9	3.5	0.9	0.4	0.3	0.2
<b>Aged 15–19 years</b>												
Employed												
Full time	'000	3.2	2.4	2.4	1.0	1.6	0.5	0.5	0.4	4.5	3.3	5.2
Part time	'000	4.2	3.6	3.3	1.5	1.8	0.6	0.5	0.5	4.9	5.7	7.3
Total	'000	5.1	4.2	4.2	1.8	2.6	0.8	0.6	0.6	6.4	6.4	9.0
Unemployed												
Looking for f/t work	'000	2.8	2.0	2.2	1.0	0.9	0.3	0.1	0.3	3.3	2.7	4.3
Looking for p/t work	'000	3.1	2.0	1.7	1.0	0.9	0.4	0.4	0.4	2.9	3.1	4.3
Total	'000	4.3	2.9	2.8	1.4	1.3	0.6	0.4	0.5	4.4	4.1	6.1
Labour force	'000	5.8	4.6	4.6	2.1	2.8	0.9	0.7	0.7	6.9	6.9	9.8
Not in labour force	'000	7.4	5.7	4.2	2.0	2.8	1.0	1.0	0.7	7.4	7.0	11.0
Unemployment rate												
Looking for f/t work	pts	3.2	3.5	2.9	4.4	2.3	4.2	3.7	5.7	1.6	2.6	1.4
Looking for p/t work	pts	1.9	1.5	1.4	2.3	1.6	3.6	8.2	3.9	1.3	1.0	0.8
Total	pts	1.7	1.5	1.4	2.1	1.4	2.8	5.3	3.3	1.0	1.0	0.7
Participation rate	pts	1.3	1.4	1.6	2.0	1.9	2.6	4.6	3.0	1.0	1.0	0.7
Unemployment to population ratio – looking for f/t work	pts	0.6	0.6	0.8	0.9	0.6	1.0	0.8	1.2	0.5	0.4	0.3

## STANDARD ERRORS *continued*

### MOVEMENT ESTIMATES

The following example illustrates how to use the standard error to interpret a movement estimate. Let us say that one month the published level estimate for females employed part time in Australia is 1,890,000; the next month the published level estimate is 1,900,000 and the associated standard error for the movement estimate is 10,600. The standard error is then used to interpret the published movement estimate of 10,000. For instance, the standard error of 10,600 indicates that:

- There are approximately two chances in three that the real movement between the two months falls within the range –600 to 20,600 (10,000 + or – 10,600)
- There are approximately nineteen chances in twenty that the real movement falls within the range –11,200 to 31,200 (10,000 + or – 21,200).

The following table shows the standard errors for this month's movement estimates.

										AUSTRALIA		
		NSW	Vic.	Qld	SA	WA	Tas.	NT	ACT	Males	Females	Persons
Aged 15 years and over												
Employed												
Full time	'000	13.7	10.5	9.0	3.9	5.4	1.7	1.6	1.5	16.9	11.9	21.3
Part time	'000	8.3	6.7	5.5	2.5	3.4	1.2	0.8	0.9	7.1	11.0	13.0
Total	'000	16.5	12.8	11.6	5.4	7.2	2.3	1.8	1.8	18.4	16.5	26.0
Unemployed												
Looking for f/t work	'000	7.7	5.8	5.3	2.3	2.6	1.1	0.7	0.8	8.8	7.0	11.5
Looking for p/t work	'000	5.0	4.2	3.4	1.4	1.7	0.6	0.6	0.6	4.8	6.0	7.8
Total	'000	9.3	7.4	6.2	2.7	3.1	1.3	1.0	0.9	10.1	9.4	14.2
Labour force	'000	17.0	13.2	12.1	5.7	7.5	2.5	1.9	1.8	19.0	17.0	26.8
Not in labour force	'000	16.0	12.9	10.6	5.0	6.1	2.1	1.7	1.7	14.4	18.7	25.1
Unemployment rate												
Looking for f/t work	pts	0.3	0.3	0.3	0.4	0.3	0.8	1.1	0.5	0.2	0.3	0.2
Looking for p/t work	pts	0.5	0.5	0.5	0.6	0.5	0.8	3.1	1.1	0.5	0.3	0.2
Total	pts	0.3	0.3	0.3	0.4	0.3	0.6	1.2	0.5	0.2	0.2	0.1
Participation rate	pts	0.3	0.3	0.4	0.5	0.5	0.6	1.3	0.7	0.2	0.2	0.2
Aged 15–19 years												
Employed												
Full time	'000	2.5	1.8	2.0	0.8	1.3	0.4	0.3	0.3	3.5	2.7	4.1
Part time	'000	3.4	2.8	2.6	1.1	1.5	0.5	0.4	0.4	3.8	4.4	5.4
Total	'000	4.0	3.2	3.1	1.3	1.9	0.6	0.5	0.5	4.8	4.8	6.5
Unemployed												
Looking for f/t work	'000	2.9	2.0	2.3	1.0	1.1	0.3	0.2	0.3	3.4	3.0	4.5
Looking for p/t work	'000	3.3	2.7	2.1	1.0	1.0	0.4	0.3	0.4	3.4	3.6	5.0
Total	'000	4.5	3.3	3.1	1.4	1.5	0.6	0.4	0.6	4.8	4.7	6.8
Labour force	'000	4.4	3.5	3.3	1.4	2.0	0.6	0.5	0.5	5.2	5.2	7.1
Not in labour force	'000	4.9	3.7	2.9	1.3	1.8	0.6	0.6	0.5	5.4	5.2	7.2
Unemployment rate												
Looking for f/t work	pts	3.4	3.7	3.0	4.7	2.5	4.5	6.7	5.9	1.7	2.8	1.5
Looking for p/t work	pts	2.1	1.8	1.7	2.4	1.7	3.8	7.8	3.9	1.4	1.1	0.9
Total	pts	1.9	1.7	1.5	2.3	1.5	3.0	5.4	3.3	1.1	1.1	0.8
Participation rate	pts	1.0	1.0	1.2	1.4	1.4	1.9	3.3	2.3	0.7	0.8	0.5
Unemployment to population ratio – looking for f/t work												
	pts	0.6	0.6	0.8	0.9	0.7	1.0	1.1	1.1	0.5	0.4	0.3

## GLOSSARY

<b>Actively looking for work</b>	Includes writing, telephoning or applying in person to an employer for work; answering an advertisement for a job; checking factory noticeboards or the touchscreens at the Centrelink offices; being registered with Centrelink as a jobseeker; checking or registering with any other employment agency; advertising or tendering for work; and contacting friends or relatives.
<b>Attending full-time education</b>	Persons aged 15–24 years enrolled at secondary or high school or enrolled as a full time student at a Technical and Further Education (TAFE) college, university, or other educational institution in the reference week.
<b>Attending school</b>	Persons aged 15–19 years enrolled at secondary or high school in the reference week.
<b>Attending tertiary educational institution full time</b>	Persons aged 15–24 years enrolled full time at a TAFE college, university, or other educational institution in the reference week, except those persons aged 15–19 years who were still attending school.
<b>Civilian population aged 15 years and over</b>	All usual residents of Australia aged 15 years and over except members of the permanent defence forces, certain diplomatic personnel of overseas governments customarily excluded from census and estimated population counts, overseas residents in Australia, and members of non-Australian defence forces (and their dependants) stationed in Australia.
<b>Employed</b>	<p>All persons aged 15 years and over who, during the reference week:</p> <ul style="list-style-type: none"> <li>■ worked for one hour or more for pay, profit, commission or payment in kind in a job or business, or on a farm (comprising employees, employers and own account workers); or</li> <li>■ worked for one hour or more without pay in a family business or on a farm (i.e. contributing family workers); or</li> <li>■ were employees who had a job but were not at work and were: <ul style="list-style-type: none"> <li>■ away from work for less than four weeks up to the end of the reference week; or</li> <li>■ away from work for more than four weeks up to the end of the reference week and received pay for some or all of the four week period to the end of the reference week; or</li> <li>■ away from work as a standard work or shift arrangement; or</li> <li>■ on strike or locked out; or</li> <li>■ on workers' compensation and expected to return to their job; or</li> </ul> </li> <li>■ were employers or own account workers, who had a job, business or farm, but were not at work.</li> </ul>
<b>Employment to population ratio</b>	For any group, the number of employed persons expressed as a percentage of the civilian population in the same group.
<b>Full-time workers</b>	Employed persons who usually worked 35 hours or more a week (in all jobs) and those who, although usually working less than 35 hours a week, worked 35 hours or more during the reference week.
<b>Labour force</b>	For any group, persons who were employed or unemployed, as defined.
<b>Labour force status</b>	A classification of the civilian population aged 15 years and over into employed, unemployed or not in the labour force, as defined. The definitions conform closely to the international standard definitions adopted by the International Conferences of Labour Statisticians.
<b>Not in labour force</b>	Persons who were not in the categories employed or unemployed as defined.
<b>Participation rate</b>	For any group, the labour force expressed as a percentage of the civilian population aged 15 years and over in the same group.
<b>Part-time workers</b>	Employed persons who usually worked less than 35 hours a week (in all jobs) and either did so during the reference week, or were not at work in the reference week.

## GLOSSARY *continued*

<b>Response rate</b>	The number of fully responding dwellings expressed as a percentage of the total number of dwellings excluding sample loss. Examples of sample loss include: dwellings where all persons are out of scope and/or coverage; vacant dwellings; dwellings under construction; dwellings converted to non-dwellings; derelict dwellings; and demolished dwellings.
<b>Seasonally adjusted series</b>	A time series of estimates with the estimated effects of normal seasonal variation removed. See Explanatory Notes 21 to 25 for more detail.
<b>Trend series</b>	A smoothed seasonally adjusted series of estimates. See Explanatory Notes 26 to 28 for more detail.
<b>Unemployed</b>	Persons aged 15 years and over who were not employed during the reference week, and: <ul style="list-style-type: none"><li>■ had actively looked for full-time or part-time work at any time in the four weeks up to the end of the reference week and were available for work in the reference week; or</li><li>■ were waiting to start a new job within four weeks from the end of the reference week and could have started in the reference week if the job had been available then.</li></ul>
<b>Unemployed looking for full-time work</b>	Unemployed persons who: <ul style="list-style-type: none"><li>■ actively looked for full-time work; or</li><li>■ were waiting to start a new full-time job.</li></ul>
<b>Unemployed looking for part-time work</b>	Unemployed persons who: <ul style="list-style-type: none"><li>■ actively looked for part-time work only; or</li><li>■ were waiting to start a new part-time job.</li></ul>
<b>Unemployment rate</b>	For any group, the number of unemployed persons expressed as a percentage of the labour force in the same group.
<b>Unemployment to population ratio</b>	For any group, the number of unemployed persons expressed as a percentage of the civilian population in the same group.



## FOR MORE INFORMATION . . .

<i>INTERNET</i>	<b>www.abs.gov.au</b> the ABS web site is the best place for data from our publications and information about the ABS.
<i>LIBRARY</i>	A range of ABS publications are available from public and tertiary libraries Australia wide. Contact your nearest library to determine whether it has the ABS statistics you require, or visit our web site for a list of libraries.

## INFORMATION AND REFERRAL SERVICE

Our consultants can help you access the full range of information published by the ABS that is available free of charge from our web site, or purchase a hard copy publication. Information tailored to your needs can also be requested as a 'user pays' service. Specialists are on hand to help you with analytical or methodological advice.

<i>PHONE</i>	1300 135 070
<i>EMAIL</i>	client.services@abs.gov.au
<i>FAX</i>	1300 135 211
<i>POST</i>	Client Services, ABS, GPO Box 796, Sydney NSW 2001

## FREE ACCESS TO STATISTICS

All ABS statistics can be downloaded free of charge from the ABS web site.

<i>WEB ADDRESS</i>	<b>www.abs.gov.au</b>
--------------------	-----------------------



2620200005063

ISSN 1448 2819

RRP \$26.00